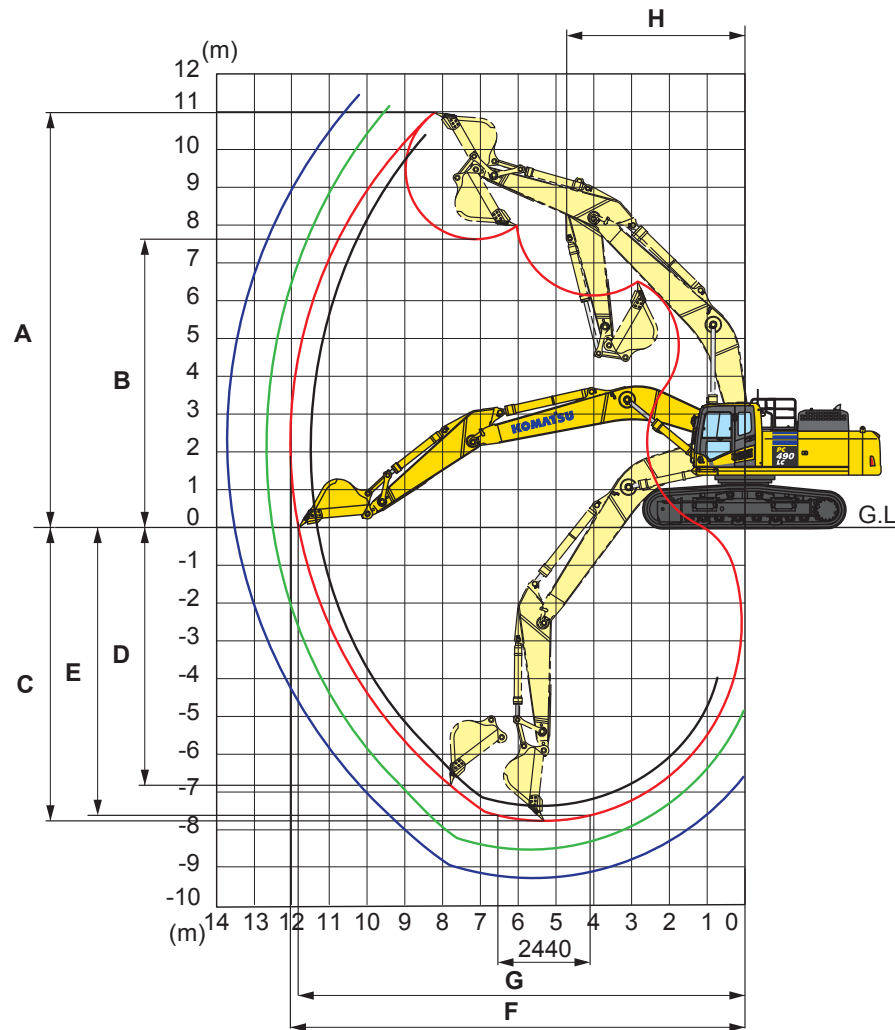




WORKING RANGE

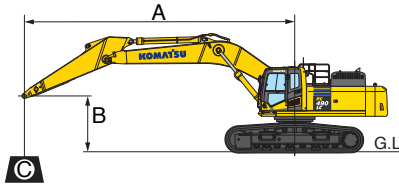


		2900 mm	3380 mm	4000 mm	4800 mm
		9'6"	11'1"	13'1"	15'9"
A	Max. digging height	10350 mm	10980 mm	11090 mm	11550 mm
B	Max. dumping height	7145 mm	7630 mm	7780 mm	8210 mm
C	Max. digging depth	7280 mm	7755 mm	8380 mm	9190 mm
D	Max. vertical wall digging depth	5635 mm	6805 mm	7220 mm	8085 mm
E	Max. digging depth for 8' level bottom	7090 mm	7615 mm	8250 mm	9080 mm
F	Max. digging reach	11445 mm	12030 mm	12565 mm	13365 mm
G	Max. digging reach at ground level	11230 mm	11810 mm	12365 mm	13180 mm
H	Min. swing radius	4810 mm	4735 mm	4800 mm	4885 mm
SAE rating	Bucket digging force at power max.	239 kN 24,400 kg / 53,790 lb	239 kN 24,400 kg / 53,790 lb	239 kN 24,400 kg / 53,790 lb	239 kN 24,400 kg / 53,790 lb
	Arm crowd force at power max.	245 kN 25000 kg / 55,120 lb	205 kN 20900 kg / 46,080 lb	184 kN 18800 kg / 41,450 lb	162 kN 16500 kg / 36,400 lb
ISO rating	Bucket digging force at power max.	275 kN 28000 kg / 61,730 lb	275 kN 28000 kg / 61,730 lb	275 kN 28000 kg / 61,730 lb	275 kN 28000 kg / 61,730 lb
	Arm crowd force at power max.	257 kN 26200 kg / 57,760 lb	214 kN 21800 kg / 48,060 lb	190 kN 19400 kg / 42,770 lb	167 kN 17000 kg / 37,500 lb

LIFT CAPACITIES



LIFTING CAPACITY WITH LIFTING MODE



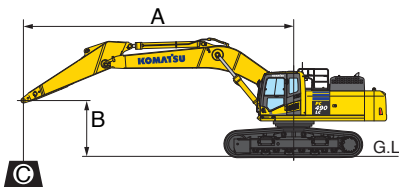
- A: Reach from swing center
- B: Bucket hook height
- C: Lifting capacity
- Cf: Rating over front
- Cs: Rating over side
- ⊗: Rating at maximum reach

- Conditions:
- Boom length: 7060 mm 23' 2"
 - Bucket: None
 - Undercarriage: Fixed Gauge
 - Lifting mode: On

Arm: 2900 mm 9'6" Shoes: 900 mm 35.5" Unit: kg lb

B	A	3.0 m 10'		4.6 m 15'		6.1 m 20'		7.6 m 25'		9.1 m 30'		⊗ MAX	
		Cf	Cs	Cf	Cs	Cf	Cs	Cf	Cs	Cf	Cs	Cf	Cs
7.6 m	25'							* 12340	11120			* 12260	10420
								* 27200	24500			* 27000	22900
6.1 m	20'					* 14370	* 14370	* 12730	10970			* 12030	8850
						* 31600	* 31600	* 28000	24100			* 26500	19500
4.6 m	15'			* 21420	* 21420	* 16160	14570	* 13570	10670	* 12090	8220	* 11980	8000
				* 47200	* 47200	* 35600	32100	* 29900	23500	* 26600	18100	* 26400	17600
3.0 m	10'					* 17970	13900	* 14490	10320	12400	8070	* 11620	7580
						* 39600	30600	* 31900	22700	* 27300	17700	* 25600	16700
1.5 m	5'					* 19120	13390	* 15170	10030	12230	7910	11480	7460
						* 42100	29500	* 33400	22100	* 26900	17400	* 25300	16400
0 m	0'			* 21910	19630	* 19290	13130	* 15340	9840	12130	7820	11820	7630
				* 48300	43200	* 42500	28900	* 33800	21600	* 26700	17200	* 26000	16800
-1.5 m	-5'			* 23340	19710	* 18470	13070	* 14770	9780			* 12350	8190
				* 51400	43400	* 40700	28800	* 32500	21500			* 27200	18000
-3.0 m	-10'	* 24130	* 24130	* 20520	19940	* 16560	13180	* 13040	9870			* 12210	9370
		* 53200	* 53200	* 45200	43900	* 36500	29000	* 28700	21700			* 26900	20600
-4.6 m	-15'			* 16040	* 16040	* 12850	* 12850					* 11420	* 11420
				* 35300	* 35300	* 28300	* 28300					* 25100	* 25100

*Load is limited by hydraulic capacity rather than tipping. Ratings are based on ISO standard No. 10567. Rated loads do not exceed 87% of hydraulic lift capacity or 75% of tipping load.



- A: Reach from swing center
- B: Bucket hook height
- C: Lifting capacity
- Cf: Rating over front
- Cs: Rating over side
- ⊗: Rating at maximum reach

- Conditions:
- Boom length: 7060 mm 23' 2"
 - Bucket: None
 - Undercarriage: Fixed Gauge
 - Lifting mode: On

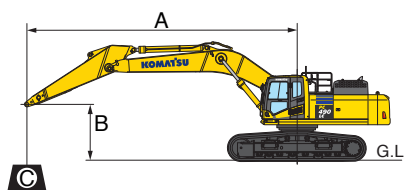
Arm: 3380 mm 11'1" Shoes: 900 mm 35.5" Unit: kg lb

B	A	3.0 m 10'		4.6 m 15'		6.1 m 20'		7.6 m 25'		9.1 m 30'		⊗ MAX	
		Cf	Cs	Cf	Cs	Cf	Cs	Cf	Cs	Cf	Cs	Cf	Cs
7.6 m	25'							* 11720	11320			* 9200	* 9200
								* 25800	24900			* 20200	* 20200
6.1 m	20'							* 12230	11140	* 11430	8480	* 9070	8090
								* 26900	24500	* 25200	18700	* 20000	17800
4.6 m	15'			* 20080	* 20080	* 15510	14820	* 13160	10820	* 11770	8350	* 9210	7410
				* 44200	* 44200	* 34200	32600	* 29000	23800	* 25900	18400	* 20300	16300
3.0 m	10'			* 24120	20980	* 17470	14130	* 14190	10460	* 12260	8160	* 9580	7050
				* 53100	46200	* 38500	31100	* 31300	23000	* 27000	18000	* 21100	15500
1.5 m	5'			* 19210	* 19210	* 18900	13570	* 15020	10140	12310	7990	* 10240	6950
				* 42300	* 42300	* 41600	29900	* 33100	22300	* 27100	17600	* 22500	15300
0 m	0'			* 21790	19470	* 19390	13240	* 15390	9910	12170	7860	10910	7100
				* 48000	43500	* 42700	29100	* 33900	21800	* 26800	17300	* 24000	15600
-1.5 m	-5'	* 15850	* 15850	* 24440	19730	* 18910	13120	* 15080	9810	12130	7820	* 11600	7540
		* 34900	* 34900	* 53800	43400	* 41700	28900	* 33200	21600	26700	17200	* 25500	16600
-3.0 m	-10'	* 24660	* 24660	* 21950	19890	* 17380	13170	* 13810	9850			* 11490	8440
		* 54300	* 54300	* 48300	43800	* 38300	29000	* 30400	21700			* 25300	18600
-4.6 m	-15'	* 21900	* 21900	* 17970	* 17970	* 14350	13400					* 10930	10320
		* 48200	* 48200	* 39600	* 39600	* 31600	29500					* 24100	22700

*Load is limited by hydraulic capacity rather than tipping. Ratings are based on ISO standard No. 10567. Rated loads do not exceed 87% of hydraulic lift capacity or 75% of tipping load.



LIFTING CAPACITY WITH LIFTING MODE



- A: Reach from swing center
- B: Bucket hook height
- C: Lifting capacity
- Cf: Rating over front
- Cs: Rating over side
- ⊗: Rating at maximum reach

- Conditions:
- Boom length: 7060 mm **23' 2"**
 - Bucket: None
 - Undercarriage: Fixed Gauge
 - Lifting mode: On

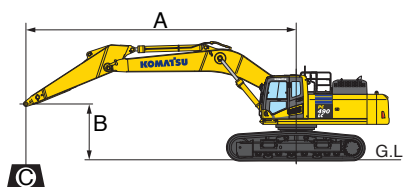
Arm: 4000 mm 13'1"

Shoes: 900 mm 35.5"

Unit: kg lb

B \ A	3.0 m 10'		4.6 m 15'		6.1 m 20'		7.6 m 25'		9.1 m 30'		⊗ MAX	
	Cf	Cs	Cf	Cs	Cf	Cs	Cf	Cs	Cf	Cs	Cf	Cs
7.6 m 25'									* 8750	8560	* 7890	* 7890
									* 19200	18800	* 17400	* 17400
6.1 m 20'							* 11350	11200	* 10650	8500	* 7810	7380
							* 25000	24700	* 23400	18700	* 17200	16200
4.6 m 15'					* 14350	* 14350	* 12350	10850	* 11120	8330	* 7930	6790
					* 31600	* 31600	* 27200	23900	* 24500	18300	* 17400	14900
3.0 m 10'		* 22280	21310	* 16440	14190	* 13480	10440	* 11710	8100	* 8230	6480	
		* 49100	46900	* 36200	31200	* 29700	23000	* 25800	17800	* 18100	14200	
1.5 m 5'		* 25090	20070	* 18140	13520	* 14470	10050	12220	7890	* 8760	6380	
		* 55300	44200	* 39900	29800	* 31900	22100	26900	17300	* 19300	14000	
0 m 0'		* 23770	19500	* 19010	13090	* 15050	9770	12030	7720	* 9590	6480	
		* 52400	43000	* 41900	28800	* 33100	21500	26500	17000	* 21100	14200	
-1.5 m -5'	* 15460	* 15460	* 25010	19350	* 18940	12880	* 15040	9610	11940	7630	10590	6830
	* 34100	* 34100	* 55100	42600	* 41700	28400	* 33100	21200	26300	16800	* 23300	15000
-3.0 m -10'	* 22240	* 22240	* 23050	19440	* 17870	12860	* 14220	9590	* 11220	7660	* 10930	7530
	* 49000	* 49000	* 50800	42800	* 39400	28300	* 31300	21100	* 24700	16800	* 24100	16600
-4.6 m -15'	* 25470	* 25470	* 19730	* 19730	* 15550	13030	* 12100	9740			* 10700	8920
	* 56100	* 56100	* 43500	* 43500	* 34200	28700	* 26600	21400			* 23600	19600

*Load is limited by hydraulic capacity rather than tipping. Ratings are based on ISO standard No. 10567. Rated loads do not exceed 87% of hydraulic lift capacity or 75% of tipping load.



- A: Reach from swing center
- B: Bucket hook height
- C: Lifting capacity
- Cf: Rating over front
- Cs: Rating over side
- ⊗: Rating at maximum reach

- Conditions:
- Boom length: 7060 mm **23' 2"**
 - Bucket: None
 - Undercarriage: Fixed Gauge
 - Lifting mode: On

Arm: 4800 mm 15'9"

Shoes: 900 mm 35.5"

Unit: kg lb

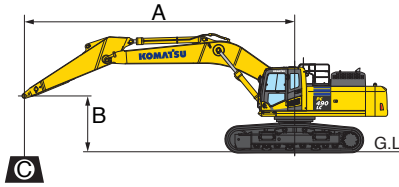
B \ A	3.0 m 10'		4.6 m 15'		6.1 m 20'		7.6 m 25'		9.1 m 30'		⊗ MAX	
	Cf	Cs	Cf	Cs	Cf	Cs	Cf	Cs	Cf	Cs	Cf	Cs
7.6 m 25'									* 9450	8730	* 6360	* 6360
									* 20800	19200	* 14000	* 14000
6.1 m 20'									* 9740	8610	* 6290	* 6290
									* 21400	18900	* 13800	* 13800
4.6 m 15'							* 11310	10990	* 10320	8400	* 6350	6060
							* 24900	24200	* 22700	18500	* 14000	13300
3.0 m 10'		* 19860	* 19860	* 15080	14450	* 12560	10540	* 11030	8130	* 6550	5800	
		* 43700	* 43700	* 33200	31800	* 27700	23200	* 24300	17900	* 14400	12700	
1.5 m 5'		* 23510	20450	* 17100	13670	* 13740	10090	* 11710	7870	* 6890	5710	
		* 51800	45000	* 37700	30100	* 30300	22200	* 25800	17300	* 15200	12500	
0 m 0'	* 10360	* 10360	* 25290	19540	* 18430	13090	* 14590	9730	11980	7650	* 7430	5770
	* 22800	* 22800	* 55700	43000	* 40600	28800	* 32100	21400	26400	16800	* 16300	12700
-1.5 m -5'	* 14230	* 14230	* 25390	19150	* 18860	12760	* 14920	9500	11810	7500	* 8260	6020
	* 31300	* 31300	* 55900	42200	* 41500	28100	* 32900	20900	26000	16500	* 18200	13200
-3.0 m -10'	* 19240	* 19240	* 24180	19100	* 18350	12640	* 14570	9400	11760	7450	* 9580	6530
	* 42400	* 42400	* 53300	42100	* 40400	27800	* 32100	20700	25900	16400	* 21100	14400
-4.6 m -15'	* 25760	* 25760	* 21670	19280	* 16760	12710	* 13260	9450	* 10180	7560	* 9990	7480
	* 56700	* 56700	* 47700	42500	* 36900	28000	* 29200	20800	* 22400	16600	* 22000	16400

*Load is limited by hydraulic capacity rather than tipping. Ratings are based on ISO standard No. 10567. Rated loads do not exceed 87% of hydraulic lift capacity or 75% of tipping load.

LIFT CAPACITIES



LIFTING CAPACITY WITH LIFTING MODE



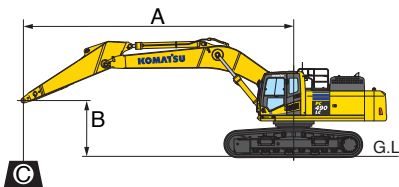
- A: Reach from swing center
- B: Bucket hook height
- C: Lifting capacity
- Cf: Rating over front
- Cs: Rating over side
- ⊗: Rating at maximum reach

- Conditions:
- Boom length: 7060 mm 23' 2"
 - Bucket: None
 - Undercarriage: Variable Gauge
 - Lifting mode: On

Arm: 2900 mm 9'6" Shoes: 900 mm 35.5" Unit: kg lb

B \ A	3.0 m 10'		4.6 m 15'		6.1 m 20'		7.6 m 25'		9.1 m 30'		⊗ MAX	
	Cf	Cs	Cf	Cs	Cf	Cs	Cf	Cs	Cf	Cs	Cf	Cs
7.6 m 25'							* 12340	11890			* 12260	11140
							* 27200	26200			* 27000	24500
6.1 m 20'					* 14370	* 14370	* 12730	11740			* 12030	9470
					* 31600	* 31600	* 28000	25800			* 26500	20800
4.6 m 15'			* 21420	* 21420	* 16160	15660	* 13570	11430	* 12090	8810	* 11980	8570
			* 47200	* 47200	* 35600	34500	* 29900	25200	* 26600	19400	* 26400	18900
3.0 m 10'					* 17970	14970	* 14490	11080	* 12460	8650	* 11880	8120
					* 39600	33000	* 31900	24400	* 27400	19000	* 26200	17900
1.5 m 5'					* 19120	14460	* 15170	10780	12510	8500	11750	8000
					* 42100	31800	* 33400	23700	27600	18700	25900	17600
0 m 0'			* 21910	21390	* 19290	14190	* 15340	10590	12410	8400	12100	8200
			* 48300	47100	* 42500	31200	* 33800	23300	27300	18500	26600	18000
-1.5 m -5'			* 23340	21470	* 18470	14130	* 14770	10530			* 12350	8800
			* 51400	47300	* 40700	31100	* 32500	23200			* 27200	19400
-3.0 m -10'	* 24130	* 24130	* 20520	* 20520	* 16560	14240	* 13040	10630			* 12210	10080
	* 53200	* 53200	* 45200	* 45200	* 36500	31400	* 28700	23400			* 26900	22200
-4.6 m -15'			* 16040	* 16040	* 12850	* 12850					* 11420	* 11420
			* 35300	* 35300	* 28300	* 28300					* 25100	* 25100

*Load is limited by hydraulic capacity rather than tipping. Ratings are based on ISO standard No. 10567. Rated loads do not exceed 87% of hydraulic lift capacity or 75% of tipping load.



- A: Reach from swing center
- B: Bucket hook height
- C: Lifting capacity
- Cf: Rating over front
- Cs: Rating over side
- ⊗: Rating at maximum reach

- Conditions:
- Boom length: 7060 mm 23' 2"
 - Bucket: None
 - Undercarriage: Variable Gauge
 - Lifting mode: On

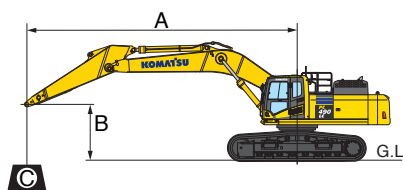
Arm: 3380 mm 11'1" Shoes: 900 mm 35.5" Unit: kg lb

B \ A	3.0 m 10'		4.6 m 15'		6.1 m 20'		7.6 m 25'		9.1 m 30'		⊗ MAX	
	Cf	Cs	Cf	Cs	Cf	Cs	Cf	Cs	Cf	Cs	Cf	Cs
7.6 m 25'							* 11720	* 11720			* 9200	* 9200
							* 25800	* 25800			* 20200	* 20200
6.1 m 20'							* 12230	11910	* 11430	9070	* 9070	8650
							* 26900	26200	* 25200	20000	* 20000	19000
4.6 m 15'			* 20080	* 20080	* 15510	* 15510	* 13160	11590	* 11770	8940	* 9210	7930
			* 44200	* 44200	* 34200	* 34200	* 29000	25500	* 25900	19700	* 20300	17400
3.0 m 10'			* 24120	22770	* 17470	15200	* 14190	11220	* 12260	8750	* 9580	7560
			* 53100	50200	* 38500	33500	* 31300	24700	* 27000	19300	* 21100	16600
1.5 m 5'			* 19210	* 19210	* 18900	14640	* 15020	10890	12590	8570	* 10240	7460
			* 42300	42300	* 41600	32200	* 33100	24000	27700	18900	* 22500	16400
0 m 0'			* 21790	21500	* 19390	14300	* 15390	10670	12450	8440	11160	7620
			* 48000	47400	* 42700	31500	* 33900	23500	27400	18600	24600	16800
-1.5 m -5'	* 15850	* 15850	* 24440	21480	* 18910	14180	* 15080	10560	* 12170	8400	* 11600	8100
	* 34900	* 34900	* 53800	47300	* 41700	31200	* 33200	23200	* 26800	18500	* 25500	17800
-3.0 m -10'	* 24660	* 24660	* 21950	21660	* 17380	14230	* 13810	10600			* 11490	9070
	* 54300	* 54300	* 48300	47700	* 38300	31300	* 30400	23300			* 25300	20000
-4.6 m -15'	* 21900	* 21900	* 17970	* 17970	* 14350	* 14350					* 10930	* 10930
	* 48200	* 48200	* 39600	* 39600	* 31600	* 31600					* 24100	* 24100

*Load is limited by hydraulic capacity rather than tipping. Ratings are based on ISO standard No. 10567. Rated loads do not exceed 87% of hydraulic lift capacity or 75% of tipping load.



LIFTING CAPACITY WITH LIFTING MODE



- A: Reach from swing center
- B: Bucket hook height
- C: Lifting capacity
- Cf: Rating over front
- Cs: Rating over side
- ⊗: Rating at maximum reach

- Conditions:
- Boom length: 7060 mm **23' 2"**
 - Bucket: None
 - Undercarriage: Variable Gauge
 - Lifting mode: On

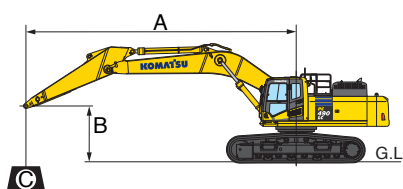
Arm: 4000 mm 13'1"

Shoes: 900 mm 35.5"

Unit: kg lb

B	A		3.0 m 10'		4.6 m 15'		6.1 m 20'		7.6 m 25'		9.1 m 30'		⊗ MAX	
	Cf	Cs	Cf	Cs	Cf	Cs	Cf	Cs	Cf	Cs	Cf	Cs	Cf	Cs
7.6 m 25'											* 8750	* 8750	* 7890	* 7890
											* 19200	* 19200	* 17400	* 17400
6.1 m 20'							* 11350	* 11350	* 10650	9100	* 7810	* 7810		
							* 25000	* 25000	* 23400	20000	* 17200	* 17200		
4.6 m 15'					* 14350	* 14350	* 12350	11610	* 11120	8920	* 7930	7280		
					* 31600	* 31600	* 27200	25600	* 24500	19600	* 17400	16000		
3.0 m 10'			* 22280	* 22280	* 16440	15270	* 13480	11200	* 11710	8690	* 8230	6960		
			* 49100	* 49100	* 36200	33600	* 29700	24700	* 25800	19100	* 18100	15300		
1.5 m 5'			* 25090	21840	* 18140	14590	* 14470	10810	* 12240	8470	* 8760	6850		
			* 55300	48100	* 39900	32100	* 31900	23800	* 26900	18600	* 19300	15100		
0 m 0'			* 23770	21260	* 19010	14150	* 15050	10520	12320	8300	* 9590	6970		
			* 52400	46800	* 41900	31200	* 33100	23200	27100	18300	* 21100	15300		
-1.5 m -5'	* 15460	* 15460	* 25010	21110	* 18940	13940	* 15040	10360	12220	8210	* 10840	7340		
	* 34100	* 34100	* 55100	46500	* 41700	30700	* 33100	22800	26900	18100	* 23900	16100		
-3.0 m -10'	* 22240	* 22240	* 23050	21200	* 17870	13920	* 14220	10340	* 11220	8240	* 10930	8100		
	* 49000	* 49000	* 50800	46700	* 39400	30700	* 31300	22800	* 24700	18100	* 24100	17800		
-4.6 m -15'	* 25470	* 25470	* 19730	* 19730	* 15550	14090	* 12100	10490			* 10700	9600		
	* 56100	* 56100	* 43500	* 43500	* 34200	31000	* 26600	23100			* 23600	21100		

*Load is limited by hydraulic capacity rather than tipping. Ratings are based on ISO standard No. 10567. Rated loads do not exceed 87% of hydraulic lift capacity or 75% of tipping load.



- A: Reach from swing center
- B: Bucket hook height
- C: Lifting capacity
- Cf: Rating over front
- Cs: Rating over side
- ⊗: Rating at maximum reach

- Conditions:
- Boom length: 7060 mm **23' 2"**
 - Bucket: None
 - Undercarriage: Variable Gauge
 - Lifting mode: On

Arm: 4800 mm 15'9"

Shoes: 900 mm 35.5"

Unit: kg lb

B	A		3.0 m 10'		4.6 m 15'		6.1 m 20'		7.6 m 25'		9.1 m 30'		⊗ MAX	
	Cf	Cs	Cf	Cs	Cf	Cs	Cf	Cs	Cf	Cs	Cf	Cs	Cf	Cs
7.6 m 25'											* 9450	9320	* 6360	* 6360
											* 20800	20500	* 14000	* 14000
6.1 m 20'											* 9740	9200	* 6290	* 6290
											* 21400	20300	* 13800	* 13800
4.6 m 15'							* 11310	* 11310	* 10320	8990	* 6350	* 6350		
							* 24900	* 24900	* 22700	19800	* 14000	* 14000		
3.0 m 10'			* 19860	* 19860	* 15080	* 15080	* 12560	11310	* 11030	8720	* 6550	6230		
			* 43700	* 43700	* 33200	* 33200	* 27700	24900	* 24300	19200	* 14400	13700		
1.5 m 5'			* 23510	22230	* 17100	14740	* 13740	10850	* 11710	8460	* 6890	6140		
			* 51800	49000	* 37700	32500	* 30300	23900	* 25800	18600	* 15200	13500		
0 m 0'	* 10360	* 10360	* 25290	21300	* 18430	14160	* 14590	10490	* 12190	8230	* 7430	6210		
	* 22800	* 22800	* 55700	46900	* 40600	31200	* 32100	23100	* 26800	18100	* 16300	13700		
-1.5 m -5'	* 14230	* 14230	* 25390	20910	* 18860	13820	* 14920	10250	12100	8080	* 8260	6490		
	* 31300	* 31300	* 55900	46000	* 41500	30400	* 32900	22600	26600	17800	* 18200	14300		
-3.0 m -10'	* 19240	* 19240	* 24180	20850	* 18350	13700	* 14570	10150	* 11820	8040	* 9580	7040		
	* 42400	* 42400	* 53300	45900	* 40400	30200	* 32100	22300	* 26000	17700	* 21100	15500		
-4.6 m -15'	* 25760	* 25760	* 21670	21030	* 16760	13770	* 13260	10210	* 10180	8140	* 9990	8060		
	* 56700	* 56700	* 47700	46300	* 36900	30300	* 29200	22500	* 22400	17900	* 22000	17700		

*Load is limited by hydraulic capacity rather than tipping. Ratings are based on ISO standard No. 10567. Rated loads do not exceed 87% of hydraulic lift capacity or 75% of tipping load.



STANDARD EQUIPMENT

- Alternator, 50 Ampere, 24V
- AM/FM radio
- Automatic engine warm-up system
- Automatic air conditioner/heater
- Auxiliary input (3.5mm jack)
- Batteries, large capacity
- Battery disconnect switch
- Boom and arm holding valves
- Converter, (2) x 12V
- Counterweight, 9950 kg **21,936 lb**
- Dry type air cleaner, double element
- Electric horn
- EMMS monitoring system
- Engine, Komatsu SAA6D125E-6-A
- Engine overheat prevention system
- Extended work equipment grease interval
- Fan guard structure
- Fuel system pre-cleaner 10 micron
- High back air suspension seat, with heat
- Hydraulic cooling fan (reversible)
- Hydraulic track adjusters
- KOMTRAX® Level 4.0
- Large LCD color monitor, high resolution
- Lock lever
- Mirrors, (LH and RH)
- Operator Protective Top Guard (OPG), Level 1
- Pattern change valve (ISO to BH control)
- Power maximizing system
- PPC hydraulic control system
- Pump/engine room partition cover
- Radiator and oil cooler dustproof net
- Rear reflectors
- Rearview monitoring system (1 camera)
- Revolving frame deck guard
- Revolving frame undercovers
- ROPS cab
- Seat belt, retractable, 76mm **3"**
- Seat belt indicator
- Secondary engine shutoff switch
- Service valve
- Shoes, triple grouser, 700mm **28"**
- Skylight
- Slip resistant foot plates
- Starter motor, 11.0kW/24V x 1
- Suction fan
- Thermal and fan guards
- Track frame undercover
- Travel alarm
- Two boom mode settings
- Working lights, 2 (boom and RH front)
- Working mode selection system



OPTIONAL EQUIPMENT

- (1) additional rearview camera
- Arms
 - 2900 mm **9'6"** arm assembly
 - 3380 mm **11'1"** arm assembly
 - 3380 mm **11'1"** arm assembly with piping
 - 4000 mm **13'1"** arm assembly
 - 4800 mm **15'9"** arm assembly
- Booms
 - 7060 mm **23'2"** HD boom assembly
 - 7060 mm **23'2"** HD boom assembly with piping
- Cab guards
 - Full front guard, OPG Level 1
 - Full front guard, OPG Level 2
 - Bolt-on top guard, OPG Level 2
 - Lower front window guard
- Counterweight removal system
- High pressure in-line hydraulic filters
- Hydraulic control unit, 1 actuator
- Rain visor
- Revolving frame undercovers, heavy duty
- Shoes, triple grouser, 800 mm **31.5"**
- Shoes, triple grouser, 900 mm **35.5"**
- Sun visor
- Straight travel pedal
- Track roller guards, full length
- Working light, front, one additional
- Variable track gauge



ATTACHMENT OPTIONS

- Grade control systems
- Hydraulic couplers
- Hydraulic kits, field installed
- Super long fronts
- PSM thumbs
- Rockland thumbs
- Vandalism protection guards with storage box

For a complete list of available attachments, please contact your local Komatsu distributor.