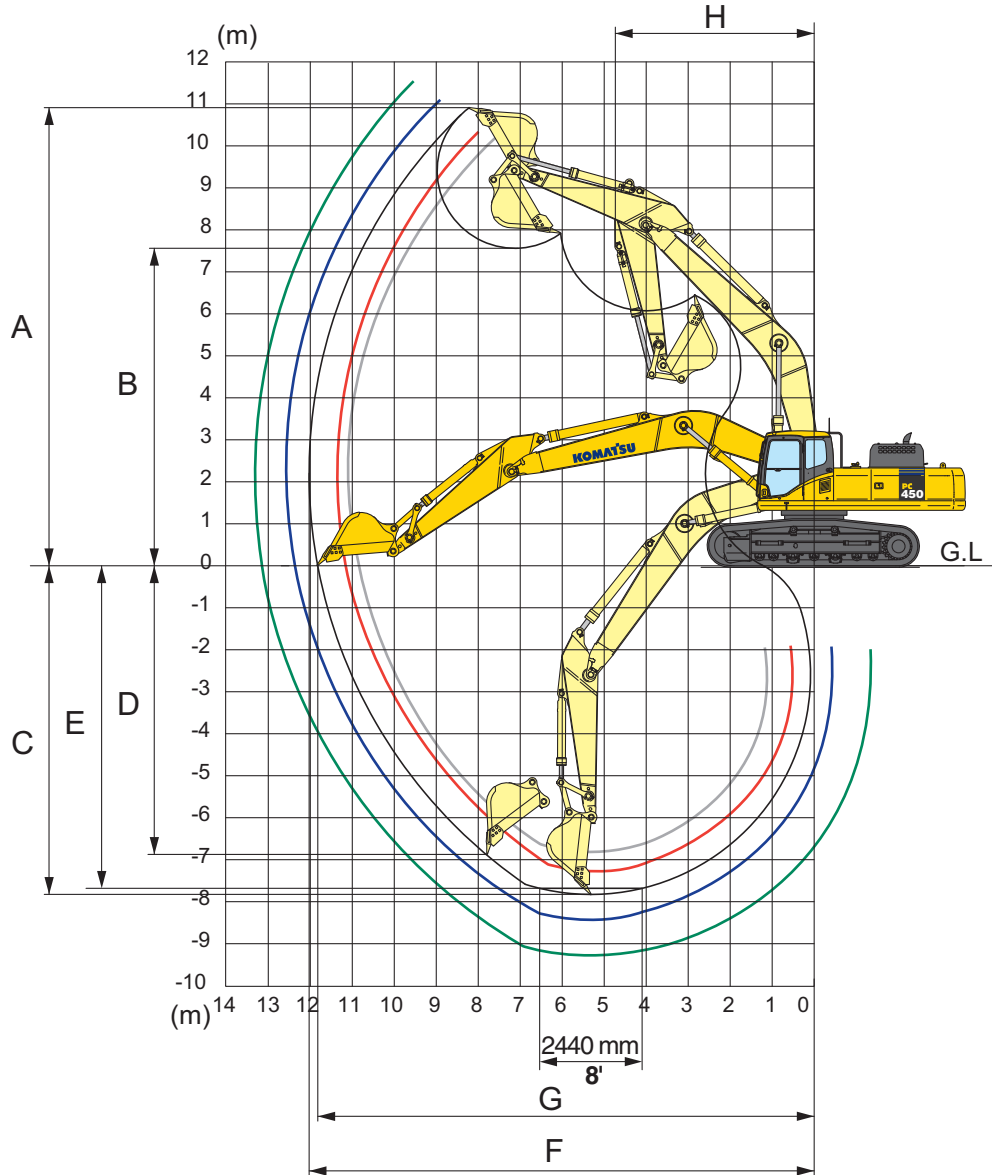


WORKING RANGES

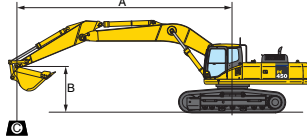


	Arm	2400 mm 7'10"	2900 mm 9'6"	3380 mm 11'1"	4000 mm 13'1"	4800 mm 15'9"
A	Max. digging height	10310 mm 33'10"	10285 mm 33'9"	10915 mm 35'10"	11025 mm 36'2"	11485 mm 37'8"
B	Max. dumping height	7070 mm 23'2"	7080 mm 23'3"	7565 mm 24'10"	7715 mm 25'4"	8145 mm 26'9"
C	Max. digging depth	6845 mm 22'6"	7345 mm 24'1"	7820 mm 25'8"	8445 mm 27'8"	9255 mm 30'4"
D	Max. vertical wall digging depth	5305 mm 17'5"	5700 mm 18'8"	6870 mm 22'6"	7285 mm 23'11"	8150 mm 26'9"
E	Max. digging depth of cut for 8' level	6650 mm 21'10"	7155 mm 23'6"	7680 mm 25'2"	8315 mm 27'3"	9145 mm 30'0"
F	Max. digging reach	11080 mm 36'4"	11445 mm 37'7"	12025 mm 39'5"	12565 mm 41'3"	13365 mm 43'10"
G	Max. digging reach at ground level	10855 mm 35'7"	11230 mm 36'10"	11820 mm 38'9"	12365 mm 40'7"	13180 mm 43'3"
H	Min. swing radius	4835 mm 15'10"	4810 mm 15'9"	4735 mm 15'6"	4800 mm 15'9"	4885 mm 16'0"

LIFTING CAPACITIES



STANDARD TRACK LIFTING CAPACITY



- A: Reach from swing center
- B: Bucket hook height
- C: Lifting capacity
- Cf: Rating over front
- Cs: Rating over side
- ⊗: Rating at maximum reach

- Conditions:
- Boom length: 7060 mm 23'2"
 - Bucket: 1.90 m³ 2.49 yd³
 - Bucket weight: 1325 kg 2,920 lb.
 - Lifting mode: On

PC450LC-8		Arm 2400 mm 7'10"		Shoe 900 mm 35.5"		Unit: kg/lb							
B	A MAX	3.0 m 10'		4.6 m 15'		6.1 m 20'		7.6 m 25'		9.1 m 30'		⊗ MAX	
		Cf	Cs	Cf	Cs	Cf	Cs	Cf	Cs	Cf	Cs	Cf	Cs
7.6 m 25'	8.0 m 26'							*11000 *24,300	8800 19,500			*8050 *17,700	7950 17,600
6.1 m 20'	8.9 m 29'							*11250 *24,800	8700 19,200			*7850 *17,300	6550 14,500
4.6 m 15'	9.4 m 31'			*19750 *43,500	18750 41,400	*14800 *32,700	11950 26,400	*12100 *26,700	8350 18,500	10200 22,500	6150 13,500	*7900 *17,500	5800 12,800
3.0 m 10'	9.7 m 32'					*16800 37,000	11300 24,900	*13050 *28,800	8000 17,700	10000 22,100	5950 13,200	*8250 *18,200	5400 12,000
1.5 m 5'	9.7 m 32'					*17850 *39,300	10750 23,700	13100 28,900	7700 17,000	9850 21,700	5800 12,800	*8900 *19,700	5300 11,700
0 m 0'	9.4 m 31'					*17850 *39,400	10450 23,100	12900 28,400	7500 16,600	9700 21,400	5700 12,600	9300 20,500	5450 12,000
-1.5 m -5'	8.9 m 29'			*19800 *43,700	16450 36,300	*17100 *37,700	10400 23,000	12800 28,300	7450 16,400	9750 21,500	5700 12,600	10100 22,200	5900 13,100
-3.0 m -10'	8.1 m 27'	*19250 *42,500	*19250 *42,500	*18900 *41,600	16800 37,100	*15250 *33,700	10550 23,300	*11700 *25,800	7550 16,700			*10150 *22,400	6900 15,300
-4.6 m -15'	6.9 m 23'			*14750 *32,600	*14750 *32,600	*11750 *25,900	10800 23,800					*9100 *20,100	*9100 *20,100

PC450LC-8		Arm 2900 mm 9'6"		Shoe 900 mm 35.5"		Unit: kg/lb							
B	A MAX	3.0 m 10'		4.6 m 15'		6.1 m 20'		7.6 m 25'		9.1 m 30'		⊗ MAX	
		Cf	Cs	Cf	Cs	Cf	Cs	Cf	Cs	Cf	Cs	Cf	Cs
7.6 m 25'	8.0 m 26'							*10100 *22,300	8900 19,600			*10100 *22,300	7950 17,600
6.1 m 20'	8.9 m 29'							*10550 *23,200	8750 19,200			*9950 *22,000	6500 14,400
4.6 m 15'	9.4 m 31'			*18100 *39,900	*18100 *39,900	*13850 *30,600	12000 26,500	*11450 *25,200	8350 18,500	*10050 *22,200	6100 13,500	9600 21,100	5700 12,600
3.0 m 10'	9.7 m 32'					*15950 35,200	11300 24,900	*12500 *27,600	7950 17,600	9950 21,900	5900 13,000	9000 19,800	5300 11,700
1.5 m 5'	9.7 m 32'					*17350 *38,200	10650 23,500	13050 28,700	7600 16,800	9750 21,500	5700 12,600	8800 19,400	5150 11,300
0 m 0'	9.5 m 31'					*17650 *38,900	10300 22,700	12750 28,100	7350 16,300	9600 21,100	5550 12,200	9050 19,900	5250 11,600
-1.5 m -5'	9.0 m 29'			*22400 *49,400	16150 35,600	*17200 *37,900	10150 22,400	12650 27,800	7250 16,000	9550 21,000	5500 12,200	9750 21,500	5650 12,500
-3.0 m -10'	8.2 m 27'	*22750 *50,100	*22750 *50,100	*20100 *44,300	16350 36,100	*15750 *34,800	10250 22,600	*12250 *27,000	7300 16,100			*10850 *23,900	6550 14,500
-4.6 m -15'	6.9 m 23'	*19400 *42,700	*19400 *42,700	*16400 *36,100	*16400 *36,100	*12950 *28,600	10550 23,300					*10550 *23,300	8600 18,900

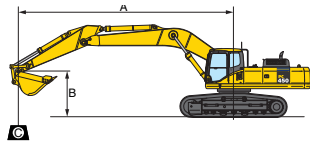
*Load is limited by hydraulic capacity rather than tipping. Ratings are based on SAE standard No. J1097. Rated loads do not exceed 87% of hydraulic lift capacity or 75% of tipping load.

PC450LC-8 HYDRAULIC EXCAVATOR

LIFTING CAPACITIES



STANDARD TRACK LIFTING CAPACITY *continued*



- A: Reach from swing center
- B: Bucket hook height
- C: Lifting capacity
- Cf: Rating over front
- Cs: Rating over side
- ☉: Rating at maximum reach

Conditions:

- Boom length: 7060 mm **23'2"**
- Bucket: 1.90 m³ **2.49 yd³**
- Bucket weight: 1325 kg **2,920 lb.**
- Lifting mode: On

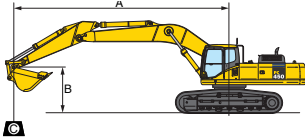
PC450LC-8		Arm 3380 mm 11'1"		Shoe 900 mm 35.5"												Unit: kg/lb	
B	A MAX	3.0 m 10'		4.6 m 15'		6.1 m 20'		7.6 m 25'		9.1 m 30'		☉ MAX					
		Cf	Cs	Cf	Cs	Cf	Cs	Cf	Cs	Cf	Cs	Cf	Cs	Cf	Cs		
7.6 m 25'	8.8 m 29'													*6800 *15,000	*6800 *15,000		
6.1 m 20'	9.6 m 31'							*10050 *22,100	8900 19,700	*9350 *20,600	6400 14,100			*6800 *15,000	5800 12,800		
4.6 m 15'	10.1 m 33'					*13200 *29,100	12300 27,100	*11000 *24,300	8550 18,900	*9750 *21,500	6250 13,800			*7000 *15,400	5150 11,400		
3.0 m 10'	10.3 m 34'			*21050 *46,400	18050 39,700	*15400 *34,000	11600 25,500	*12200 *26,900	8150 17,900	10100 22,200	6000 13,300			*7400 *16,300	4800 10,600		
1.5 m 5'	10.3 m 34'			*18800 *41,400	16750 36,900	*17100 *37,700	10900 24,100	13150 29,000	7750 17,100	9850 21,700	5800 12,800			8050 17,700	4700 10,300		
0 m 0'	10.1 m 33'			*18100 *40,000	16250 35,800	*17750 *39,100	10500 23,100	12900 28,400	7500 16,500	9650 21,300	5650 12,400			8200 18,100	4750 10,500		
-1.5 m -5'	9.7 m 32'	*10650 *23,400	*10650 *23,400	*23450 *51,700	16200 35,700	*17550 *38,700	10300 22,700	12700 28,000	7350 16,200	9550 21,100	5550 12,200			8800 19,400	5100 11,200		
-3.0 m -10'	8.9 m 29'	*19150 *42,200	*19150 *42,200	*21400 *47,200	16350 36,100	*16450 *36,300	10300 22,700	12700 28,000	7350 16,200	9600 21,200	5600 12,300			9950 22,000	5800 12,800		
-4.6 m -15'	7.8 m 26'	*22850 *50,400	*22850 *50,400	*18150 *40,000	16550 36,400	*14150 *31,200	10500 23,200	*10600 *23,400	7500 16,500					*9800 *21,700	7200 15,900		
-6.1 m -20'	6.1 m 20'			*12800 *28,200	*12800 *28,200	*9500 *21,000	*9500 *21,000							*8700 *19,200	*8700 *19,200		

PC450LC-8		Arm 4000 mm 13'1"		Shoe 900 mm 35.5"												Unit: kg/lb	
B	A MAX	3.0 m 10'		4.6 m 15'		6.1 m 20'		7.6 m 25'		9.1 m 30'		☉ MAX					
		Cf	Cs	Cf	Cs	Cf	Cs	Cf	Cs	Cf	Cs	Cf	Cs	Cf	Cs		
7.6 m 25'	9.4 m 31'									*7800 *17,100	6600 14,600			*5850 *12,900	*5850 *12,900		
6.1 m 20'	10.2 m 33'									*8700 *19,100	6550 14,400			*5800 *12,800	5250 11,600		
4.6 m 15'	10.6 m 35'							*10300 *22,700	8700 19,200	*9200 *20,300	6350 14,000			*5950 *13,200	4700 10,400		
3.0 m 10'	10.9 m 36'			*20200 *44,600	18550 40,900	*14400 *31,700	11800 26,000	*11550 *25,500	8250 18,200	*9900 *21,800	6100 13,400			*6300 *13,900	4400 9,700		
1.5 m 5'	10.9 m 36'			*22700 *50,100	17000 37,500	*16400 *36,100	11050 24,300	*12700 *28,000	7800 17,200	9850 21,800	5800 12,800			*6850 *15,100	4250 9,400		
0 m 0'	10.7 m 35'			*21600 *47,600	16200 35,700	*17450 *38,500	10500 23,100	12900 28,400	7500 16,500	9650 21,300	5600 12,400			7500 16,600	4300 9,500		
-1.5 m -5'	10.2 m 34'	*11350 *25,100	*11350 *25,100	*23950 *52,800	15900 35,100	*17550 *38,700	10200 22,400	12650 27,900	7250 16,000	9500 21,000	5500 12,100			7950 17,600	4550 10,100		
-3.0 m -10'	9.5 m 31'	*19600 *43,200	*19600 *43,200	*22450 *49,500	16000 35,300	*16900 *37,200	10100 22,300	12550 27,700	7200 15,900	9500 20,900	5450 12,100			8900 19,600	5100 11,300		
-4.6 m -15'	8.5 m 28'	*25450 *56,100	*25450 *56,100	*19700 *43,500	16300 36,000	*15150 *33,400	10250 22,600	*11650 *25,700	7300 16,100					*9500 *20,900	6200 13,600		
-6.1 m -20'	7.0 m 23'	*19600 *43,200	*19600 *43,200	*15300 *33,700	*15300 *33,700	*11700 *25,800	10600 23,400							*9000 *19,900	8550 18,800		

*Load is limited by hydraulic capacity rather than tipping. Ratings are based on SAE standard No. J1097. Rated loads do not exceed 87% of hydraulic lift capacity or 75% of tipping load.



STANDARD TRACK LIFTING CAPACITY *continued*



- A: Reach from swing center
- B: Bucket hook height
- C: Lifting capacity
- Cf: Rating over front
- Cs: Rating over side
- ⊗: Rating at maximum reach

- Conditions:
- Boom length: 7060 mm **23'2"**
 - Bucket: 1.90 m³ **2.49 yd³**
 - Bucket weight: 1325 kg **2,920 lb.**
 - Lifting mode: On

PC450LC-8		Arm 4800 mm 15'9"		Shoe 900 mm 35.5"										Unit: kg/lb	
A B	MAX	3.0 m 10'		4.6 m 15'		6.1 m 20'		7.6 m 25'		9.1 m 30'		⊗ MAX			
		Cf	Cs	Cf	Cs	Cf	Cs	Cf	Cs	Cf	Cs	Cf	Cs		
7.6 m 25'	10.4 m 34'											*4400 *9,750	*4400 *9,750		
6.1 m 20'	11.1 m 36'									*7650 *16,900	6550 14,500	*4380 *9,650	4380 9,650		
4.6 m 15'	11.5 m 38'									*8250 *18,250	6350 14,000	*4450 *9,850	3950 8,700		
3.0 m 10'	11.7 m 38'					*12800 *28,250	12000 26,500	*10450 *23,100	8300 18,300	*9050 *19,950	6050 13,350	*4650 *10,300	3700 8,150		
1.5 m 5'	11.7 m 38'			*21650 *47,750	17500 38,600	*15100 *33,350	11150 24,600	*11800 *26,050	7800 17,200	9800 21,650	5750 12,650	*5000 *11,050	3550 7,900		
0 m 0'	11.5 m 38'			*23200 *51,200	16300 35,950	*16650 *36,800	10450 23,100	12800 28,200	7400 16,300	9500 21,000	5450 12,100	*5550 *12,250	3600 7,950		
-1.5 m -5'	11.1 m 36'	*10900 *24,050	*10900 *24,050	*23900 *52,750	15700 34,700	*17250 *38,100	10050 22,150	12500 27,550	7100 15,650	9300 20,550	5300 11,700	*6350 *14,000	3750 8,350		
-3.0 m -10'	10.5 m 34'	*16300 *36,000	*16300 *36,000	*23200 *51,150	15600 34,400	*17050 *37,600	9850 21,700	12300 27,150	6950 15,350	9200 20,350	5200 11,500	7450 16,450	4150 9,200		
-4.6 m -15'	9.5 m 31'	*23100 *50,950	*23100 *50,950	*21250 *46,850	15800 34,800	*15900 *35,100	9900 21,800	*12300 *27,150	6950 15,400	9250 20,450	5250 11,600	*8500 *18,800	4900 10,800		
-6.1 m -20'	8.2 m 27'	*24300 *53,600	*24300 *53,600	*17800 *39,250	16150 35,700	*13500 *29,750	10100 22,350	*10100 *22,300	7150 15,800			*8350 *18,450	6300 13,950		

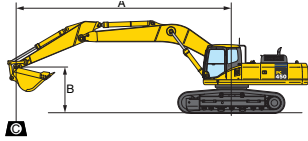
*Load is limited by hydraulic capacity rather than tipping. Ratings are based on SAE standard No. J1097. Rated loads do not exceed 87% of hydraulic lift capacity or 75% of tipping load.

PC450LC-8 HYDRAULIC EXCAVATOR

LIFTING CAPACITIES



VARIABLE GAUGE LIFTING CAPACITY



- A: Reach from swing center
- B: Bucket hook height
- C: Lifting capacity
- Cf: Rating over front
- Cs: Rating over side
- ⊗: Rating at maximum reach

Conditions:

- Boom length: 7060 mm 23'2"
- Bucket: 1.90 m³ 2.49 yd³
- Bucket weight: 1325 kg 2,920 lb.
- Lifting mode: On

PC450LC-8		Arm 2400 mm 7'10"		Shoe 900 mm 35.5"												Unit: kg/lb	
B	A	MAX	3.0 m 10'		4.6 m 15'		6.1 m 20'		7.6 m 25'		9.1 m 30'		⊗ MAX				
			Cf	Cs	Cf	Cs	Cf	Cs	Cf	Cs	Cf	Cs	Cf	Cs			
7.6 m 25'	8.0 m 26'								*11000 *24,300	9550 21,000			*8050 *17,700	*8050 *17,700			
6.1 m 20'	8.9 m 29'								*11250 *24,800	9400 20,800			*7850 *17,300	7150 15,700			
4.6 m 15'	9.4 m 31'			*19750 *43,500	*19750 *43,500	*14800 *32,700	12950 28,600	*12100 *26,700	9100 20,000	10450 23,100	6700 14,700	*7900 *17,500	6350 14,000				
3.0 m 10'	9.7 m 32'					*16800 *37,000	12250 27,100	*13050 *28,800	8700 19,200	10250 22,700	6500 14,400	*8250 *18,200	5900 13,100				
1.5 m 5'	9.7 m 32'					*17850 *39,300	11750 25,900	13450 29,700	8400 18,600	10100 22,300	6350 14,000	*8900 *19,700	5800 12,800				
0 m 0'	9.4 m 31'					*17850 *39,400	11450 25,200	13250 29,200	8200 18,100	10000 22,000	6250 13,800	9550 21,000	5950 13,200				
-1.5 m -5'	8.9 m 29'			*19800 *43,700	18050 39,800	*17100 *37,700	11400 25,100	13150 29,000	8150 18,000	10000 22,000	6250 13,800	10350 22,800	6500 14,300				
-3.0 m -10'	8.1 m 27'	*19250 *42,500	*19250 *42,500	*18900 *41,600	18250 40,300	*15250 *33,700	11550 25,400	*11700 *25,800	8250 18,200			*10150 *22,400	7550 16,700				
-4.6 m -15'	6.9 m 23'			*14750 *32,600	*14750 *32,600	*11750 *25,900	*11750 *25,900					*9100 *20,100	*9100 *20,100				
-6.1 m -20'																	

PC450LC-8		Arm 2900 mm 9'6"		Shoe 900 mm 35.5"												Unit: kg/lb	
B	A	MAX	3.0 m 10'		4.6 m 15'		6.1 m 20'		7.6 m 25'		9.1 m 30'		⊗ MAX				
			Cf	Cs	Cf	Cs	Cf	Cs	Cf	Cs	Cf	Cs	Cf	Cs			
7.6 m 25'	8.0 m 26'								*10100 *22,300	9650 21,200			*10100 *22,300	8600 19,000			
6.1 m 20'	8.9 m 29'								*10550 *23,200	9450 20,800			*9950 *22,000	7100 15,600			
4.6 m 15'	9.4 m 31'			*18100 *39,900	*18100 *39,900	*13850 *30,600	13050 28,700	*11450 *25,200	9100 20,000	*10050 *22,200	6650 14,700	9850 21,700	6250 13,800				
3.0 m 10'	9.7 m 32'					*15950 *35,200	12300 27,100	*12500 *27,600	8650 19,100	10200 22,500	6450 14,200	9250 20,300	5800 12,800				
1.5 m 5'	9.7 m 32'					*17350 *38,200	11650 25,700	13350 29,400	8300 18,400	10000 22,000	6250 13,800	9050 20,000	5650 12,400				
0 m 0'	9.5 m 31'					*17650 *38,900	11300 24,900	13100 28,900	8050 17,800	9850 21,700	6100 13,400	9300 20,500	5750 12,700				
-1.5 m -5'	9.0 m 29'			*22400 *49,400	17750 39,200	*17200 *37,900	11150 24,600	12950 28,600	7950 17,500	9800 21,600	6050 13,400	10050 22,100	6200 13,700				
-3.0 m -10'	8.2 m 27'	*22750 *50,100	*22750 *50,100	*20100 *44,300	18000 39,700	*15750 *34,800	11250 24,800	*12250 *27,000	8000 17,700			*10850 *23,900	7200 15,900				
-4.6 m -15'	6.9 m 23'	*19400 *42,700	*19400 *42,700	*16400 *36,100	*16400 *36,100	*12950 *28,600	11550 25,400					*10550 *23,300	9400 20,700				
-6.1 m -20'																	

*Load is limited by hydraulic capacity rather than tipping. Ratings are based on SAE standard No. J1097. Rated loads do not exceed 87% of hydraulic lift capacity or 75% of tipping load.

PC450LC-8		Arm 3380 mm 11'1"				Shoe 900 mm 35.5"				Unit: kg/lb			
A \ B	MAX	3.0 m 10'		4.6 m 15'		6.1 m 20'		7.6 m 25'		9.1 m 30'		MAX	
		Cf	Cs	Cf	Cs	Cf	Cs	Cf	Cs	Cf	Cs	Cf	Cs
7.6 m 25'	8.8 m 29'											*6800	*6800
												*15,000	*15,000
6.1 m 20'	9.6 m 31'							*10050	9650	*9350	6950	*6800	6300
								*22,100	21,200	*20,600	15,300	*15,000	13,900
4.6 m 15'	10.1 m 33'					*13200	*13200	*11000	9250	*9750	6800	*7000	5650
						*29,100	*29,100	*24,300	20,400	*21,500	15,000	*15,400	12,400
3.0 m 10'	10.3 m 34'			*21050	19700	*15400	12600	*12200	8850	*10350	6550	*7400	5300
				*46,400	43,400	*34,000	27,700	*26,900	19,500	*22,800	14,500	*16,300	11,600
1.5 m 5'	10.3 m 34'			*18800	18400	*17100	11900	*13200	8450	10100	6350	*8100	5150
				*41,400	40,500	*37,700	26,300	*29,100	18,700	22,300	14,000	*17,800	11,400
0 m 0'	10.1 m 33'			*18100	17850	*17750	11450	13200	8200	9900	6150	8450	5250
				*40,000	39,400	*39,100	25,300	29,100	18,100	21,900	13,600	18,600	11,600
-1.5 m -5'	9.7 m 32'	*10650	*10650	*23450	17800	*17550	11250	13050	8050	9850	6100	9050	5600
		*23,400	*23,400	*51,700	39,300	*38,700	24,800	28,800	17,700	21,700	13,400	19,900	12,300
-3.0 m -10'	8.9 m 29'	*19150	*19150	*21400	18000	*16450	11300	*12800	8050	*9700	6150	*10000	6350
		*42,200	*42,200	*47,200	39,700	*36,300	24,900	*28,200	17,700	*21,400	13,500	*22,100	14,000
-4.6 m -15'	7.8 m 26'	*22850	*22850	*18150	*18150	*14150	11500	*10600	8200			*9800	7900
		*50,400	*50,400	*40,000	*40,000	*31,200	25,300	*23,400	18,100			*21,700	17,400
-6.1 m -20'	6.1 m 20'			*12800	*12800	*9500	*9500					*8700	*8700
				*28,200	*28,200	*21,000	*21,000					*19,200	*19,200

PC450LC-8		Arm 4000 mm 13'1"				Shoe 900 mm 35.5"				Unit: kg/lb			
A \ B	MAX	3.0 m 10'		4.6 m 15'		6.1 m 20'		7.6 m 25'		9.1 m 30'		MAX	
		Cf	Cs	Cf	Cs	Cf	Cs	Cf	Cs	Cf	Cs	Cf	Cs
7.6 m 25'	9.4 m 31'									*7800	7200	*5850	*5850
										*17,100	15,800	*12,900	*12,900
6.1 m 20'	10.2 m 33'									*8700	7100	*5800	5750
										*19,100	15,600	*12,800	12,600
4.6 m 15'	10.6 m 35'							*10300	9450	*9200	6900	*5950	5150
								*22,700	20,800	*20,300	15,200	*13,200	11,400
3.0 m 10'	10.9 m 36'			*20200	19850	*14400	12800	*11550	8950	*9900	6650	*6300	4850
				*44,600	43,700	*31,700	28,200	*25,500	19,700	*21,800	14,600	*13,900	10,700
1.5 m 5'	10.9 m 36'			*22700	18650	*16400	12000	*12700	8500	10150	6350	*6850	4700
				*50,100	41,200	*36,100	26,500	*28,000	18,800	22,300	14,000	*15,100	10,400
0 m 0'	10.7 m 35'			*21600	17800	*17450	11450	13200	8200	9900	6150	*7650	4750
				*47,600	39,300	*38,500	25,300	29,100	18,000	21,800	13,600	*16,900	10,500
-1.5 m -5'	10.2 m 34'	*11350	*11350	*23950	17550	*17550	11150	12950	7950	9750	6000	8200	5050
		*25,100	*25,100	*52,800	38,700	*38,700	24,600	28,600	17,600	21,500	13,300	18,100	11,100
-3.0 m -10'	9.5 m 31'	*19600	*19600	*22450	17650	*16900	11100	12900	7900	9750	6000	9150	5650
		*43,200	*43,200	*49,500	38,900	*37,200	24,500	28,400	17,400	21,500	13,200	20,100	12,400
-4.6 m -15'	8.5 m 28'	*25450	*25450	*19700	17950	*15150	11250	*11650	8000			*9500	6800
		*56,100	*56,100	*43,500	39,500	*33,400	24,800	*25,700	17,700			*20,900	14,900
-6.1 m -20'	7.0 m 23'	*19600	*19600	*15300	*15300	*11700	11500					*9000	*9000
		*43,200	*43,200	*33,700	*33,700	*25,800	25,300					*19,900	*19,900

PC450LC-8		Arm 4800 mm 15'9"				Shoe 900 mm 35.5"				Unit: kg/lb			
A \ B	MAX	3.0 m 10'		4.6 m 15'		6.1 m 20'		7.6 m 25'		9.1 m 30'		MAX	
		Cf	Cs	Cf	Cs	Cf	Cs	Cf	Cs	Cf	Cs	Cf	Cs
7.6 m 25'	10.4 m 34'											*4400	*4400
												*9,750	*9,750
6.1 m 20'	11.1 m 36'									*7650	7100	*4380	*4380
										*16,900	15,750	*9,650	*9,650
4.6 m 15'	11.5 m 38'									*8250	6900	*4450	4350
										*18,250	15,200	*9,850	9,600
3.0 m 10'	11.7 m 38'					*12800	*12800	*10450	9000	*9050	6600	*4650	4050
						*28,250	*28,250	*23,100	19,900	*19,950	14,550	*10,300	9,000
1.5 m 5'	11.7 m 38'			*21650	19150	*15100	12150	*11800	8500	*9850	6300	*5000	3950
				*47,750	42,250	*33,350	26,800	*26,050	18,800	*21,700	13,850	*11,050	8,750
0 m 0'	11.5 m 38'			*23200	17950	*16650	11450	*12800	8100	9800	6000	*5550	4000
				*51,200	39,550	*38,800	25,300	*28,250	17,850	21,600	13,300	*12,250	8,850
-1.5 m -5'	11.1 m 36'	*10900	*10900	*23900	17350	*17250	11000	12800	7800	9550	5850	*6350	4200
		*24,050	*24,050	*52,750	38,250	*38,100	24,300	28,250	17,200	21,150	12,850	*14,000	9,250
-3.0 m -10'	10.5 m 34'	*16300	*16300	*23200	17200	*17050	10800	12650	7650	9500	5750	*7600	4600
		*36,000	*36,000	*51,150	38,000	*37,600	23,850	27,900	16,900	20,950	12,700	*16,750	10,200
-4.6 m -15'	9.5 m 31'	*23100	*23100	*21250	17400	*15900	10850	*12300	7650	*9400	5800	*8500	5400
		*50,950	*50,950	*46,850	38,400	*35,100	24,000	*27,150	16,900	*20,800	12,800	*18,800	11,950
-6.1 m -20'	8.2 m 27'	*24300	*24300	*17800	*17600	*13500	11100	*10100	7850			*8350	6950
		*53,600	*53,600	*39,250	*38,850	*29,750	24,500	*22,300	17,350			*18,450	15,350

*Load is limited by hydraulic capacity rather than tipping. Ratings are based on SAE standard No. J1097. Rated loads do not exceed 87% of hydraulic lift capacity or 75% of tipping load.



STANDARD EQUIPMENT

- Additional fuel filter with water separator
- Alternator, 50 Ampere, 24V
- AM/FM Radio
- Automatic air conditioner with defroster
- Auto-decel
- Automatic engine warm-up system
- Batteries, large capacity, 2 x 12V, 140 Ah
- Boom and arm holding valves
- Cab, capable OPG (FOG) with optional bolt-on top guard, damper mounted
- Counterweight, 9500 kg **20,943 lb**
- Dry type air cleaner, double element
- Electric horn
- EMMS monitoring system
- Engine, Komatsu SAA6D125E-5
- Engine overheat prevention system
- Extended work equipment grease intervals
- Fan guard structure
- Foot plates, slip resistant
- Hydraulic filters, high pressure, in-line
- Hydraulic track adjusters (each side)
- KOMTRAX®
- Large 7" TFT LCD monitor panel
- Operator Protective Top Guard (OPG), Level 1
- Pattern change valve
- Power maximizing system
- PPC hydraulic control system
- Radiator & oil cooler with net
- Rearview mirrors (LH & RH)
- Rearview camera (1)
- Revolving frame deck guards
- Revolving frame undercovers
- Seat belt, retractable 76 mm **3"**
- Seat, suspension
- Service valve (1 additional)
- Starting motor, 11 kW
- Suction fan
- Track guiding guard, each side or center section
- Track roller, 8 each side
- Track shoe
—700 mm **28"** triple grouser
- Travel alarm
- Two boom mode settings
- Undercover for track frame center
- Working lights, 2 (boom and RH)
- Working mode selection system



OPTIONAL EQUIPMENT

- (1) Additional rearview camera, RH side
- Air ride suspension seat
- Arms
—2400 mm **7'10"** arm assembly
—2900 mm **9'6"** arm assembly
—3380 mm **11'1"** arm assembly
—3380 mm **11'1"** w/one actuator piping
—4000 mm **13'1"** arm assembly
—4800 mm **15'9"** arm assembly
- Boom
—7060 mm **23'2"** HD boom assembly
—7060 mm **23'2"** HD w/one actuator piping
- Rain visor
- Sun visor
- Converter, 12V
- Counterweight removal device
- OPG top guard, Level 2, bolt-on
- Full front guard Level 1
- Full front guard Level 2
- Hydraulic control unit
- Revolving frame undercovers, heavy-duty
- Shoes, triple grouser: 800 mm **31.5"**
- Shoes, triple grouser: 900 mm **35.5"**
- Straight travel pedal
- Track roller guards (full length)
- Variable gauge track frame
- Working light, additional front



ATTACHMENT OPTIONS

- JRB attachments
 - Couplers
 - Smart-Loc
 - Versa-Loc
 - Vandal protection guards with storage box
- Komatsu buckets
- Lincoln autolube systems
- PSM thumbs
- Rockland thumbs

For a complete list of available attachments, please contact your local Komatsu distributor.

KOMATSU®