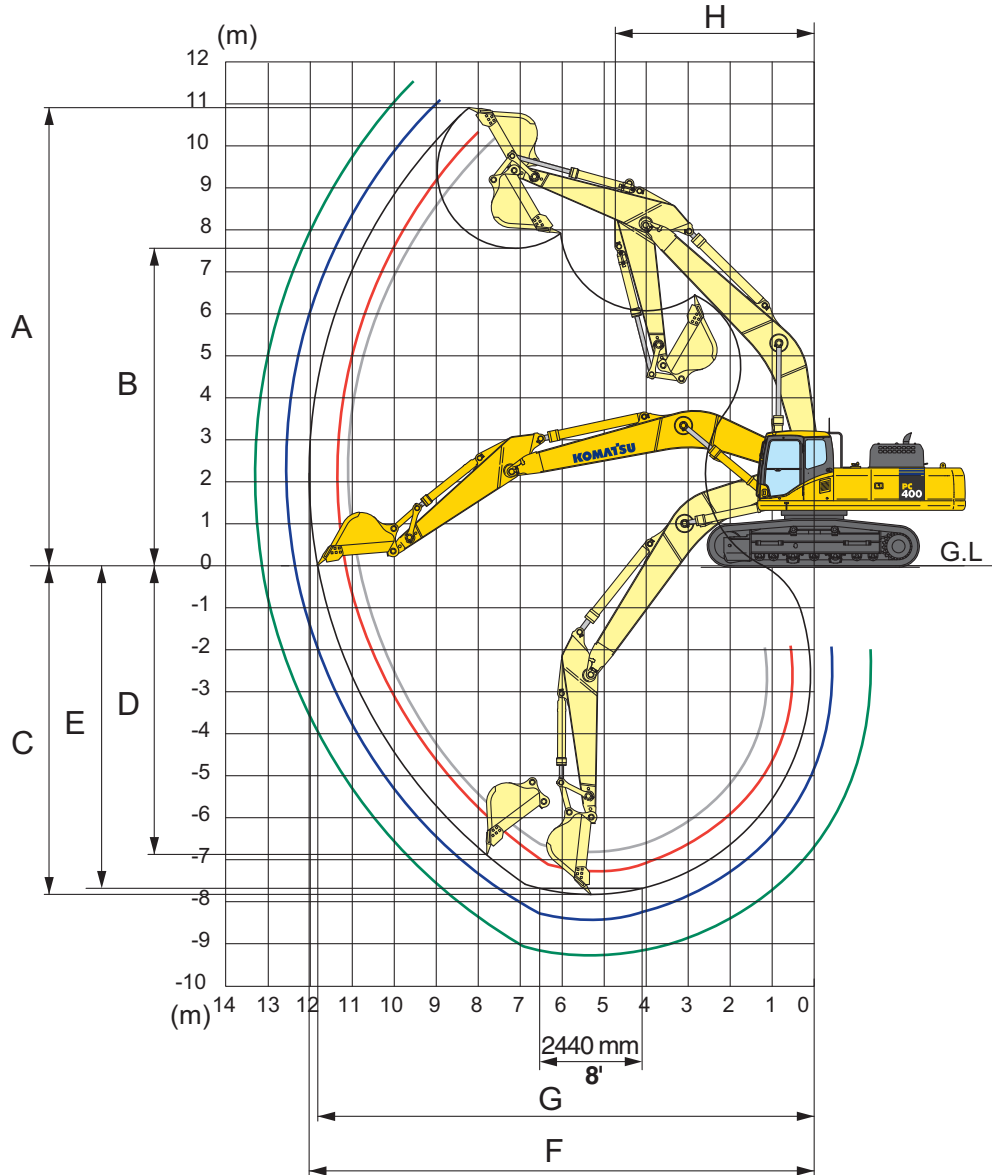


WORKING RANGES

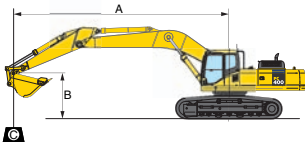


	Arm	2400 mm 7'10"	2900 mm 9'6"	3380 mm 11'1"	4000 mm 13'1"	4800 mm 15'9"
A	Max. digging height	10310 mm 33'10"	10285 mm 33'9"	10915 mm 35'10"	11025 mm 36'2"	11485 mm 37'8"
B	Max. dumping height	7070 mm 23'2"	7080 mm 23'3"	7565 mm 24'10"	7715 mm 25'4"	8145 mm 26'9"
C	Max. digging depth	6845 mm 22'6"	7345 mm 24'1"	7820 mm 25'8"	8445 mm 27'8"	9255 mm 30'4"
D	Max. vertical wall digging depth	5305 mm 17'5"	5700 mm 18'8"	6870 mm 22'6"	7285 mm 23'11"	8150 mm 26'9"
E	Max. digging depth of cut for 8' level	6650 mm 21'10"	7155 mm 23'6"	7680 mm 25'2"	8315 mm 27'3"	9145 mm 30'0"
F	Max. digging reach	11080 mm 36'4"	11445 mm 37'7"	12025 mm 39'5"	12565 mm 41'3"	13365 mm 43'10"
G	Max. digging reach at ground level	10855 mm 35'7"	11230 mm 36'10"	11820 mm 38'9"	12365 mm 40'7"	13180 mm 43'3"
H	Min. swing radius	4835 mm 15'10"	4810 mm 15'9"	4735 mm 15'6"	4800 mm 15'9"	4885 mm 16'0"

LIFTING CAPACITIES



STANDARD TRACK LIFTING CAPACITY



- A: Reach from swing center
- B: Bucket hook height
- C: Lifting capacity
- Cf: Rating over front
- Cs: Rating over side
- ☉: Rating at maximum reach

- Conditions:
- Boom length: 7060 mm 23'2"
 - Bucket: 1.90 m³ 2.49 yd³
 - Bucket weight: 1325 kg 2,920 lb.
 - Lifting mode: On

PC400LC-8		Arm 2400 mm 7'10"		Shoe 900 mm 35.5"		Unit: kg/lb							
B	A MAX	3.0 m 10'		4.6 m 15'		6.1 m 20'		7.6 m 25'		9.1 m 30'		☉ MAX	
		Cf	Cs	Cf	Cs	Cf	Cs	Cf	Cs	Cf	Cs	Cf	Cs
7.6 m 25'	8.0 m 26'							*11000 *24,300	8800 19,500			*8050 *17,700	7950 17,600
6.1 m 20'	8.9 m 29'							*11250 *24,800	8700 19,200			*7850 *17,300	6550 14,500
4.6 m 15'	9.4 m 31'			*19750 *43,500	18750 41,400	*14800 *32,700	11950 26,400	*12100 *26,700	8350 18,500	10200 22,500	6150 13,500	*7900 *17,500	5800 12,800
3.0 m 10'	9.7 m 32'					*16800 37,000	11300 24,900	*13050 *28,800	8000 17,700	10000 22,100	5950 13,200	*8250 *18,200	5400 12,000
1.5 m 5'	9.7 m 32'					*17850 *39,300	10750 23,700	13100 28,900	7700 17,000	9850 21,700	5800 12,800	*8900 *19,700	5300 11,700
0 m 0'	9.4 m 31'					*17850 *39,400	10450 23,100	12900 28,400	7500 16,600	9700 21,400	5700 12,600	9300 20,500	5450 12,000
-1.5 m -5'	8.9 m 29'			*19800 *43,700	16450 36,300	*17100 *37,700	10400 23,000	12800 28,300	7450 16,400	9750 21,500	5700 12,600	10100 22,200	5900 13,100
-3.0 m -10'	8.1 m 27'	*19250 *42,500	*19250 *42,500	*18900 *41,600	16800 37,100	*15250 *33,700	10550 23,300	*11700 *25,800	7550 16,700			*10150 *22,400	6900 15,300
-4.6 m -15'	6.9 m 23'			*14750 *32,600	*14750 *32,600	*11750 *25,900	10800 23,800					*9100 *20,100	*9100 *20,100

PC400LC-8		Arm 2900 mm 9'6"		Shoe 900 mm 35.5"		Unit: kg/lb							
B	A MAX	3.0 m 10'		4.6 m 15'		6.1 m 20'		7.6 m 25'		9.1 m 30'		☉ MAX	
		Cf	Cs	Cf	Cs	Cf	Cs	Cf	Cs	Cf	Cs	Cf	Cs
7.6 m 25'	8.0 m 26'							*10100 *22,300	8900 19,600			*10100 *22,300	7950 17,600
6.1 m 20'	8.9 m 29'							*10550 *23,200	8750 19,200			*9950 *22,000	6500 14,400
4.6 m 15'	9.4 m 31'			*18100 *39,900	*18100 *39,900	*13850 *30,600	12000 26,500	*11450 *25,200	8350 18,500	*10050 *22,200	6100 13,500	9600 21,100	5700 12,600
3.0 m 10'	9.7 m 32'					*15950 35,200	11300 24,900	*12500 *27,600	7950 17,600	9950 21,900	5900 13,000	9000 19,800	5300 11,700
1.5 m 5'	9.7 m 32'					*17350 *38,200	10650 23,500	13050 28,700	7600 16,800	9750 21,500	5700 12,600	8800 19,400	5150 11,300
0 m 0'	9.5 m 31'					*17650 *38,900	10300 22,700	12750 28,100	7350 16,300	9600 21,100	5550 12,200	9050 19,900	5250 11,600
-1.5 m -5'	9.0 m 29'			*22400 *49,400	16150 35,600	*17200 *37,900	10150 22,400	12650 27,800	7250 16,000	9550 21,000	5500 12,200	9750 21,500	5650 12,500
-3.0 m -10'	8.2 m 27'	*22750 *50,100	*22750 *50,100	*20100 *44,300	16350 36,100	*15750 *34,800	10250 22,600	*12250 *27,000	7300 16,100			*10850 *23,900	6550 14,500
-4.6 m -15'	6.9 m 23'	*19400 *42,700	*19400 *42,700	*16400 *36,100	*16400 *36,100	*12950 *28,600	10550 23,300					*10550 *23,300	8600 18,900

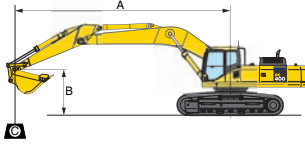
*Load is limited by hydraulic capacity rather than tipping. Ratings are based on SAE standard No. J1097. Rated loads do not exceed 87% of hydraulic lift capacity or 75% of tipping load.

PC400LC-8 HYDRAULIC EXCAVATOR

LIFTING CAPACITIES



STANDARD TRACK LIFTING CAPACITY *continued*



- A: Reach from swing center
- B: Bucket hook height
- C: Lifting capacity
- Cf: Rating over front
- Cs: Rating over side
- ⊗: Rating at maximum reach

- Conditions:
- Boom length: 7060 mm **23'2"**
 - Bucket: 1.90 m³ **2.49 yd³**
 - Bucket weight: 1325 kg **2,920 lb.**
 - Lifting mode: On

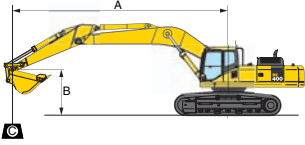
PC400LC-8		Arm 3380 mm 11'1"		Shoe 900 mm 35.5"		Unit: kg/lb									
B	A	MAX	3.0 m 10'		4.6 m 15'		6.1 m 20'		7.6 m 25'		9.1 m 30'		⊗ MAX		
			Cf	Cs	Cf	Cs	Cf	Cs	Cf	Cs	Cf	Cs	Cf	Cs	
7.6 m 25'	8.8 m 29'												*6800 *15,000	*6800 *15,000	
6.1 m 20'	9.6 m 31'							*10050 *22,100	8900 19,700	*9350 *20,600	6400 14,100		*6800 *15,000	5800 12,800	
4.6 m 15'	10.1 m 33'					*13200 *29,100	12300 27,100	*11000 *24,300	8550 18,900	*9750 *21,500	6250 13,800		*7000 *15,400	5150 11,400	
3.0 m 10'	10.3 m 34'			*21050 *46,400	18050 39,700	*15400 *34,000	11600 25,500	*12200 *26,900	8150 17,900	10100 22,200	6000 13,300		*7400 *16,300	4800 10,600	
1.5 m 5'	10.3 m 34'			*18800 *41,400	16750 36,900	*17100 *37,700	10900 24,100	13150 29,000	7750 17,100	9850 21,700	5800 12,800		8050 17,700	4700 10,300	
0 m 0'	10.1 m 33'			*18100 *40,000	16250 35,800	*17750 *39,100	10500 23,100	12900 28,400	7500 16,500	9650 21,300	5650 12,400		8200 18,100	4750 10,500	
-1.5 m -5'	9.7 m 32'	*10650 *23,400	*10650 *23,400	*23450 *51,700	16200 35,700	*17550 *38,700	10300 22,700	12700 28,000	7350 16,200	9550 21,100	5550 12,200		8800 19,400	5100 11,200	
-3.0 m -10'	8.9 m 29'	*19150 *42,200	*19150 *42,200	*21400 *47,200	16350 36,100	*16450 *36,300	10300 22,700	12700 28,000	7350 16,200	9600 21,200	5600 12,300		9950 22,000	5800 12,800	
-4.6 m -15'	7.8 m 26'	*22850 *50,400	*22850 *50,400	*18150 *40,000	16550 36,400	*14150 *31,200	10500 23,200	*10600 *23,400	7500 16,500				*9800 *21,700	7200 15,900	
-6.1 m -20'	6.1 m 20'			*12800 *28,200	*12800 *28,200	*9500 *21,000	*9500 *21,000						*8700 *19,200	*8700 *19,200	

PC400LC-8		Arm 4000 mm 13'1"		Shoe 900 mm 35.5"		Unit: kg/lb									
B	A	MAX	3.0 m 10'		4.6 m 15'		6.1 m 20'		7.6 m 25'		9.1 m 30'		⊗ MAX		
			Cf	Cs	Cf	Cs	Cf	Cs	Cf	Cs	Cf	Cs	Cf	Cs	
7.6 m 25'	9.4 m 31'										*7800 *17,100	6600 14,600	*5850 *12,900	*5850 *12,900	
6.1 m 20'	10.2 m 33'										*8700 *19,100	6550 14,400	*5800 *12,800	5250 11,600	
4.6 m 15'	10.6 m 35'							*10300 *22,700	8700 19,200	*9200 *20,300	6350 14,000		*5950 *13,200	4700 10,400	
3.0 m 10'	10.9 m 36'			*20200 *44,600	18550 40,900	*14400 *31,700	11800 26,000	*11550 *25,500	8250 18,200	*9900 *21,800	6100 13,400		*6300 *13,900	4400 9,700	
1.5 m 5'	10.9 m 36'			*22700 *50,100	17000 37,500	*16400 *36,100	11050 24,300	*12700 *28,000	7800 17,200	9850 21,800	5800 12,800		*6850 *15,100	4250 9,400	
0 m 0'	10.7 m 35'			*21600 *47,600	16200 35,700	*17450 *38,500	10500 23,100	12900 28,400	7500 16,500	9650 21,300	5600 12,400		7500 16,600	4300 9,500	
-1.5 m -5'	10.2 m 34'	*11350 *25,100	*11350 *25,100	*23950 *52,800	15900 35,100	*17550 *38,700	10200 22,400	12650 27,900	7250 16,000	9500 21,000	5500 12,100		7950 17,600	4550 10,100	
-3.0 m -10'	9.5 m 31'	*19600 *43,200	*19600 *43,200	*22450 *49,500	16000 35,300	*16900 *37,200	10100 22,300	12550 27,700	7200 15,900	9500 20,900	5450 12,100		8900 19,600	5100 11,300	
-4.6 m -15'	8.5 m 28'	*25450 *56,100	*25450 *56,100	*19700 *43,500	16300 36,000	*15150 *33,400	10250 22,600	*11650 *25,700	7300 16,100				*9500 *20,900	6200 13,600	
-6.1 m -20'	7.0 m 23'	*19600 *43,200	*19600 *43,200	*15300 *33,700	*15300 *33,700	*11700 *25,800	10600 23,400						*9000 *19,900	8550 18,800	

*Load is limited by hydraulic capacity rather than tipping. Ratings are based on SAE standard No. J1097. Rated loads do not exceed 87% of hydraulic lift capacity or 75% of tipping load.



STANDARD TRACK LIFTING CAPACITY *continued*



- A: Reach from swing center
- B: Bucket hook height
- C: Lifting capacity
- Cf: Rating over front
- Cs: Rating over side
- ⊗: Rating at maximum reach

- Conditions:
- Boom length: 7060 mm **23'2"**
 - Bucket: 1.90 m³ **2.49 yd³**
 - Bucket weight: 1325 kg **2,920 lb.**
 - Lifting mode: On

PC400LC-8		Arm 4800 mm 15'9"		Shoe 900 mm 35.5"		Unit: kg/lb							
A B	MAX	3.0 m 10'		4.6 m 15'		6.1 m 20'		7.6 m 25'		9.1 m 30'		⊗ MAX	
		Cf	Cs	Cf	Cs	Cf	Cs	Cf	Cs	Cf	Cs	Cf	Cs
7.6 m 25'	9.4 m 31'									*7650 *16,900	6500 14,400	*5700 *12,600	*5700 *12,600
6.1 m 20'	10.2 m 33'									*8550 *18,900	6450 14,200	*5700 *12,500	5150 11,300
4.6 m 15'	10.6 m 35'							*10150 *22,400	8600 19,000	*9050 *20,000	6250 13,700	*5850 *12,900	4600 10,100
3.0 m 10'	10.9 m 36'			*20100 *44,300	18400 40,600	*14250 *31,400	11650 25,700	*11400 *25,200	8150 17,900	*9750 *21,500	5950 13,200	*6150 *13,600	4300 9,400
1.5 m 5'	10.9 m 36'			*22550 *49,800	16900 37,200	*16250 *35,800	10900 24,000	*12550 *27,700	7700 17,000	9750 21,500	5700 12,600	*6700 *14,700	4150 9,200
0 m 0'	10.7 m 35'			*21450 *47,300	16050 35,400	*17300 *38,200	10350 22,800	12750 28,100	7350 16,200	9550 21,000	5500 12,100	7400 16,300	4200 9,300
-1.5 m -5'	10.2 m 34'	*11250 *24,800	*11250 *24,800	*23800 *52,400	15800 34,900	*17400 *38,400	10050 22,200	12500 27,600	7150 15,800	9400 20,700	5350 11,800	7850 17,300	4450 9,800
-3.0 m -10'	9.5 m 31'	*19450 *42,900	*19450 *42,900	*22300 *49,100	15900 35,100	*16750 *36,900	10000 22,100	12450 27,500	7100 15,600	9350 20,700	5350 11,800	8750 19,300	5000 11,000
-4.6 m -15'	8.5 m 28'	*25350 *55,900	*25350 *55,900	*19550 *43,100	16200 35,700	*15000 *33,000	10150 22,400	*11500 *25,300	7200 15,900			*9350 *20,600	6050 13,300
-6.1 m -20'	7.0 m 23'	*19450 *42,800	*19450 *42,800	*15150 *33,400	*15150 *33,400	*11550 *25,400	10500 23,200					*8850 *19,600	8400 18,500

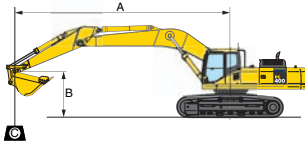
*Load is limited by hydraulic capacity rather than tipping. Ratings are based on SAE standard No. J1097. Rated loads do not exceed 87% of hydraulic lift capacity or 75% of tipping load.

PC400LC-8 HYDRAULIC EXCAVATOR

LIFTING CAPACITIES



VARIABLE GAUGE LIFTING CAPACITY



- A: Reach from swing center
- B: Bucket hook height
- C: Lifting capacity
- Cf: Rating over front
- Cs: Rating over side
- ☉: Rating at maximum reach

- Conditions:
- Boom length: 7060 mm 23'2"
 - Bucket: 1.90 m³ 2.49 yd³
 - Bucket weight: 1325 kg 2,920 lb.
 - Lifting mode: On

PC400LC-8		Arm 2400 mm 7'10"				Shoe 900 mm 35.5"				Unit: kg/lb			
B	A MAX	3.0 m 10'		4.6 m 15'		6.1 m 20'		7.6 m 25'		9.1 m 30'		☉ MAX	
		Cf	Cs	Cf	Cs	Cf	Cs	Cf	Cs	Cf	Cs	Cf	Cs
7.6 m 25'	8.0 m 26'							*11000 *24,300	9000 19,900			*8050 *17,700	*8050 *17,700
6.1 m 20'	8.9 m 29'							*11250 *24,800	8900 19,600			*7850 *17,300	6750 14,800
4.6 m 15'	9.4 m 31'			*19750 *43,500	19150 42,200	*14800 *32,700	12200 26,900	*12100 *26,700	8550 18,900	10450 23,100	6300 13,900	*7900 *17,500	5950 13,100
3.0 m 10'	9.7 m 32'					*16800 *37,000	11550 25,400	*13050 *28,800	8200 18,100	10250 22,700	6150 13,500	*8250 *18,200	5550 12,300
1.5 m 5'	9.7 m 32'					*17850 *39,300	11000 24,300	13450 29,700	7900 17,400	10100 22,300	5950 13,100	*8900 *19,700	5450 12,000
0 m 0'	9.4 m 31'					*17850 *39,400	10700 23,600	13250 29,200	7700 17,000	10000 22,000	5850 12,900	9550 21,000	5600 12,400
-1.5 m -5'	8.9 m 29'			*19800 *43,700	16850 37,100	*17100 *37,700	10650 23,500	13150 29,000	7650 16,900	10000 22,000	5850 13,000	10350 22,800	6100 13,400
-3.0 m -10'	8.1 m 27'	*19250 *42,500	*19250 *42,500	*18900 *41,600	17000 37,500	*15250 *33,700	10800 23,800	*11700 *25,800	7750 17,100			*10150 *22,400	7100 15,600
-4.6 m -15'	6.9 m 23'			*14750 *32,600	*14750 *32,600	*11750 *25,900	11050 24,400					*9100 *20,100	*9100 *20,100
-6.1 m -20'													

PC400LC-8		Arm 2900 mm 9'6"				Shoe 900 mm 35.5"				Unit: kg/lb			
B	A MAX	3.0 m 10'		4.6 m 15'		6.1 m 20'		7.6 m 25'		9.1 m 30'		☉ MAX	
		Cf	Cs	Cf	Cs	Cf	Cs	Cf	Cs	Cf	Cs	Cf	Cs
7.6 m 25'	8.0 m 26'							*10100 *22,300	9100 20,100			*10100 *22,300	8150 18,000
6.1 m 20'	8.9 m 29'							*10550 *23,200	8900 19,700			*9950 *22,000	6700 14,700
4.6 m 15'	9.4 m 31'			*18100 *39,900	*18100 *39,900	*13850 *30,600	12300 27,100	*11450 *25,200	8550 18,900	*10050 *22,200	6250 13,800	9850 21,700	5850 12,900
3.0 m 10'	9.7 m 32'					*15950 *35,200	11550 25,500	*12500 *27,600	8150 18,000	10200 22,500	6050 13,300	9250 20,300	5450 12,000
1.5 m 5'	9.7 m 32'					*17350 *38,200	10950 24,100	13350 29,400	7800 17,200	10000 22,000	5850 12,900	9050 20,000	5300 11,600
0 m 0'	9.5 m 31'					*17650 *38,900	10550 23,300	13100 28,900	7550 16,700	9850 21,700	5700 12,600	9300 20,500	5400 11,900
-1.5 m -5'	9.0 m 29'			*22400 *49,400	16550 36,400	*17200 *37,900	10400 23,000	12950 28,600	7450 16,400	9800 21,600	5650 12,500	10050 22,100	5800 12,800
-3.0 m -10'	8.2 m 27'	*22750 *50,100	*22750 *50,100	*20100 *44,300	16750 36,900	*15750 *34,800	10500 23,200	*12250 *27,000	7500 16,500			*10850 *23,900	6750 14,900
-4.6 m -15'	6.9 m 23'	*19400 *42,700	*19400 *42,700	*16400 *36,100	*16400 *36,100	*12950 *28,600	10800 23,800					*10550 *23,300	8800 19,400
-6.1 m -20'													

*Load is limited by hydraulic capacity rather than tipping. Ratings are based on SAE standard No. J1097. Rated loads do not exceed 87% of hydraulic lift capacity or 75% of tipping load.

PC400LC-8		Arm 3380 mm 11'1"		Shoe 900 mm 35.5"		Unit: kg/lb							
A \ B	MAX	3.0 m 10'		4.6 m 15'		6.1 m 20'		7.6 m 25'		9.1 m 30'		MAX	
		Cf	Cs	Cf	Cs	Cf	Cs	Cf	Cs	Cf	Cs	Cf	Cs
7.6 m 25'	8.8 m 29'											*6800	*6800
												*15,000	*15,000
6.1 m 20'	9.6 m 31'							*10050	9650	*9350	6950	*6800	6300
								*22,100	21,200	*20,600	15,300	*15,000	13,900
4.6 m 15'	10.1 m 33'					*13200	*13200	*11000	9250	*9750	6800	*7000	5650
						*29,100	*29,100	*24,300	20,400	*21,500	15,000	*15,400	12,400
3.0 m 10'	10.3 m 34'			*21050	19700	*15400	12600	*12200	8850	*10350	6550	*7400	5300
				*46,400	43,400	*34,000	27,700	*26,900	19,500	*22,800	14,500	*16,300	11,600
1.5 m 5'	10.3 m 34'			*18800	18400	*17100	11900	*13200	8450	10100	6350	*8100	5150
				*41,400	40,500	*37,700	26,300	*29,100	18,700	22,300	14,000	*17,800	11,400
0 m 0'	10.1 m 33'			*18100	17850	*17750	11450	13200	8200	9900	6150	8450	5250
				*40,000	39,400	*39,100	25,300	29,100	18,100	21,900	13,600	18,600	11,600
-1.5 m -5'	9.7 m 32'	*10650	*10650	*23450	17800	*17550	11250	13050	8050	9850	6100	9050	5600
		*23,400	*23,400	*51,700	39,300	*38,700	24,800	28,800	17,700	21,700	13,400	19,900	12,300
-3.0 m -10'	8.9 m 29'	*19150	*19150	*21400	18000	*16450	11300	*12800	8050	*9700	6150	*10000	6350
		*42,200	*42,200	*47,200	39,700	*36,300	24,900	*28,200	17,700	*21,400	13,500	*22,100	14,000
-4.6 m -15'	7.8 m 26'	*22850	*22850	*18150	*18150	*14150	11500	*10600	8200			*9800	7900
		*50,400	*50,400	*40,000	*40,000	*31,200	25,300	*23,400	18,100			*21,700	17,400
-6.1 m -20'	6.1 m 20'			*12800	*12800	*9500	*9500					*8700	*8700
				*28,200	*28,200	*21,000	*21,000					*19,200	*19,200

PC400LC-8		Arm 4000 mm 13'1"		Shoe 900 mm 35.5"		Unit: kg/lb							
A \ B	MAX	3.0 m 10'		4.6 m 15'		6.1 m 20'		7.6 m 25'		9.1 m 30'		MAX	
		Cf	Cs	Cf	Cs	Cf	Cs	Cf	Cs	Cf	Cs	Cf	Cs
7.6 m 25'	9.4 m 31'									*7800	6800	*5850	*5850
										*17,100	14,900	*12,900	*12,900
6.1 m 20'	10.2 m 33'									*8700	6700	*5800	5400
										*19,100	14,800	*12,800	11,900
4.6 m 15'	10.6 m 35'							*10300	8900	*9200	6500	*5950	4850
								*22,700	19,600	*20,300	14,300	*13,200	10,700
3.0 m 10'	10.9 m 36'			*20200	18950	*14400	12050	*11550	8450	*9900	6250	*6300	4500
				*44,600	41,800	*31,700	26,500	*25,500	18,600	*21,800	13,800	*13,900	10,000
1.5 m 5'	10.9 m 36'			*22700	17400	*16400	11300	*12700	8000	10150	6000	*6850	4400
				*50,100	38,400	*36,100	24,900	*28,000	17,700	22,300	13,200	*15,100	9,700
0 m 0'	10.7 m 35'			*21600	16600	*17450	10750	13200	7650	9900	5750	*7650	4450
				*47,600	36,600	*38,500	23,700	29,100	16,900	21,800	12,700	*16,900	9,800
-1.5 m -5'	10.2 m 34'	*11350	*11350	*23950	16300	*17550	10450	12950	7450	9750	5650	8200	4700
		*25,100	*25,100	*52,800	35,900	*38,700	23,000	28,600	16,400	21,500	12,400	18,100	10,400
-3.0 m -10'	9.5 m 31'	*19600	*19600	*22450	16400	*16900	10400	12900	7400	9750	5600	9150	5250
		*43,200	*43,200	*49,500	36,200	*37,200	22,900	28,400	16,300	21,500	12,400	20,100	11,600
-4.6 m -15'	8.5 m 28'	*25450	*25450	*19700	16700	*15150	10500	*11650	7500			*9500	6350
		*56,100	*56,100	*43,500	36,800	*33,400	23,200	*25,700	16,500			*20,900	14,000
-6.1 m -20'	7.0 m 23'	*19600	*19600	*15300	*15300	*11700	*10750					*9000	8750
		*43,200	*43,200	*33,700	*33,700	*25,800	*23,700					*19,900	19,300

PC400LC-8		Arm 4800 mm 15'9"		Shoe 900 mm 35.5"		Unit: kg/lb							
A \ B	MAX	3.0 m 10'		4.6 m 15'		6.1 m 20'		7.6 m 25'		9.1 m 30'		MAX	
		Cf	Cs	Cf	Cs	Cf	Cs	Cf	Cs	Cf	Cs	Cf	Cs
7.6 m 25'	9.4 m 31'									*7650	6650	*5700	*5700
										*16,900	14,700	*12,600	*12,600
6.1 m 20'	10.2 m 33'									*8550	6600	*5700	5250
										*18,900	14,500	*12,500	11,600
4.6 m 15'	10.6 m 35'							*10150	8800	*9050	6400	*5850	4700
								*22,400	19,400	*20,000	14,100	*12,900	10,400
3.0 m 10'	10.9 m 36'			*20100	18800	*14250	11900	*11400	8300	*9750	6100	*6150	4400
				*44,300	41,500	*31,400	26,300	*25,200	18,400	*21,500	13,500	*13,600	9,700
1.5 m 5'	10.9 m 36'			*22550	17250	*16250	11150	*12550	7900	10000	5850	*6700	4300
				*49,800	38,100	*35,800	24,600	*27,700	17,400	22,100	12,900	*14,700	9,400
0 m 0'	10.7 m 35'			*21450	16450	*17300	10600	13100	7550	9800	5650	*7500	4350
				*47,300	36,300	*38,200	23,400	28,800	16,600	21,600	12,500	*16,500	9,500
-1.5 m -5'	10.2 m 34'	*11250	*11250	*23800	16200	*17400	10300	12850	7350	9650	5500	8050	4600
		*24,800	*24,800	*52,400	35,700	*38,400	22,700	28,300	16,200	21,300	12,200	17,800	10,100
-3.0 m -10'	9.5 m 31'	*19450	*19450	*22300	16300	*16750	10250	12800	7300	9650	5500	9000	5150
		*42,900	*42,900	*49,100	35,900	*36,900	22,600	28,200	16,100	21,200	12,100	19,800	11,300
-4.6 m -15'	8.5 m 28'	*25350	*25350	*19550	16600	*15000	10400	*11500	7400			*9350	6200
		*55,900	*55,900	*43,100	36,600	*33,000	23,000	*25,300	16,300			*20,600	13,700
-6.1 m -20'	7.0 m 23'	*19450	*19450	*15150	*15150	*11550	*10650					*8850	8600
		*42,800	*42,800	*33,400	*33,400	*25,400	*23,400					*19,600	19,000

*Load is limited by hydraulic capacity rather than tipping. Ratings are based on SAE standard No. J1097. Rated loads do not exceed 87% of hydraulic lift capacity or 75% of tipping load.



STANDARD EQUIPMENT

- Additional fuel filter with water separator
- Automatic air conditioner with defroster, hot & cool box
- Alternator, 50 Ampere, 24V
- Auto-decel
- Automatic engine warm-up system
- Automatic deaeration system for fuel line
- Batteries, large capacity 140 Ah/2 x 12V
- Boom and arm holding valves
- Cab, capable OPG (FOG) with optional bolt-on top guard, damper mounted
- Counterweight, 9500 kg **20,943 lb**
- Dry type air cleaner, double element
- Electric horn
- EMMS monitoring system
- Engine, Komatsu SAA6D125E-5
- Engine overheat prevention system
- Fan guard structure
- Foot plates, slip resistant
- Frame deck guards, revolving
- Frame undercovers, revolving
- Hydraulic filters, high pressure, in-line
- Hydraulic track adjusters (each side)
- KOMTRAX™
- Large 7" TFT LCD monitor panel
- Extended work equipment grease intervals
- Power maximizing system
- PPC hydraulic control system
- Radiator & oil cooler dust proof net
- Rearview mirrors (LH & RH)
- Rear view camera (1)
- Seat belt, retractable 76 mm **3"**
- Seat, suspension
- Service valve
- Starting motor, 11 kW
- Suction fan
- Track guiding guard, each side or center section
- Track roller, 8 each side
- Track shoe
—700 mm **28"** triple grouser
- Travel alarm
- Two settings for boom
- Undercover for track frame center
- Working light, 2 (boom and RH)
- Working mode selection system



OPTIONAL EQUIPMENT

- (1) Additional rear view camera
- Arms
—2400 mm **7'10"** arm assembly
—2900 mm **9'6"** arm assembly
—3380 mm **11'1"** arm assembly
—3380 mm **11'1"** w/one actuator piping
—4000 mm **13'1"** arm assembly
—4800 mm **15'9"** arm assembly
- Bolt-on top guard, (Operator Protective Guards level 2 (FOG))
- Boom
—7060 mm **23'2"**
—7060 mm **23'2"** w/one actuator piping
- Cab accessories
—Rain visor
—Sun visor
- Cab front guard
—Full height guard
—Half height guard
- Converter, 12V
- Counterweight removal device
- Frame undercovers, revolving, heavy-duty
- Hydraulic control unit
- Pattern change valve
- Shoes, triple grouser shoes
—800 mm **31.5"**
—900 mm **35.5"**
- Straight travel pedal
- Suspension seat, air-ride
- Track roller guards (full length)
- Variable gauge track frame
- Working light, additional front



ATTACHMENT OPTIONS

- JRB attachments
 - Boom cylinder guards
 - Couplers (Smart-Loc, Roto-Loc)
 - Swinger buckets
 - Top window guard (wire mesh)
 - Vandal protection guards
 - Window guards (Lexan®, wire mesh)
- Komatsu buckets
- Lincoln autolube systems
- PSM thumbs

For a complete list of available attachments, please contact your local Komatsu distributor.

KOMATSU®