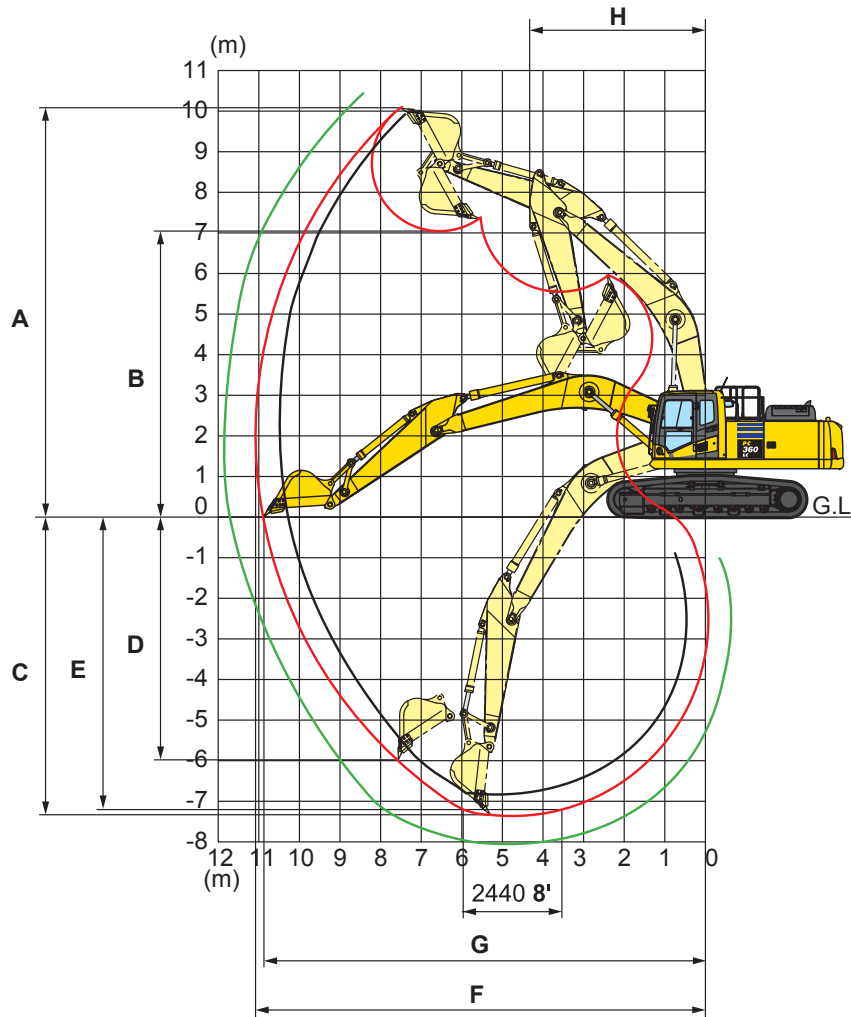




WORKING RANGE

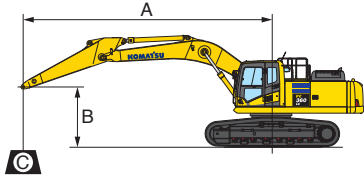


	Arm Length	2540 mm 8'4"	3185 mm 10'5"	4020 mm 13'2"
A	Max. digging height	9965 mm 32'8"	10210 mm 33'6"	10550 mm 34'7"
B	Max. dumping height	6895 mm 22'7"	7110 mm 23'4"	7490 mm 24'7"
C	Max. digging depth	6705 mm 22'0"	7380 mm 24'3"	8180 mm 26'10"
D	Max. vertical wall digging depth	5880 mm 19'4"	6480 mm 21'3"	7280 mm 23'11"
E	Max. digging depth for 8' level bottom	6520 mm 21'5"	7180 mm 23'7"	8045 mm 26'5"
F	Max. digging reach	10550 mm 34'7"	11100 mm 36'5"	11900 mm 39'1"
G	Max. digging reach at ground level	10355 mm 34'0"	10920 mm 35'10"	11730 mm 38'6"
H	Min. swing radius	4400 mm 14'5"	4310 mm 14'2"	4320 mm 14'2"
SAE rating	Bucket digging force at power max.	229 kN 23300 kg / 51,370 lb	200 kN 20400 kg / 44,970 lb	200 kN 20400 kg / 44,970 lb
	Arm crowd force at power max.	193 kN 19700 kg / 43,430 lb	165 kN 16800 kg / 37,040 lb	139 kN 14200 kg / 31,310 lb
ISO rating	Bucket digging force at power max.	259 kN 26400 kg / 58,200 lb	228 kN 23200 kg / 51,150 lb	227 kN 23100 kg / 50,930 lb
	Arm crowd force at power max.	201 kN 20500 kg / 45,190 lb	171 kN 17400 kg / 38,360 lb	144 kN 14700 kg / 32,410 lb

LIFT CAPACITIES



LIFTING CAPACITY WITH LIFTING MODE



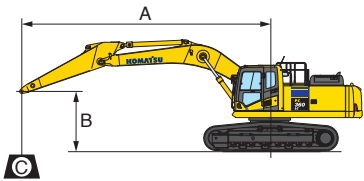
- A: Reach from swing center
- B: Bucket hook height
- C: Lifting capacity
- Cf: Rating over front
- Cs: Rating over side
- ⊗ : Rating at maximum reach

- Conditions :
- 6500 mm 21' 3" one-piece boom
 - Bucket: None
 - Lifting mode: On

Arm: 3185 mm 10'5" Shoes: 800 mm 31.5" Unit: kg lb

B \ A	3.0 m 10'		4.6 m 15'		6.1 m 20'		7.6 m 25'		9.1 m 30'		⊗ MAX	
	Cf	Cs	Cf	Cs	Cf	Cs	Cf	Cs	Cf	Cs	Cf	Cs
7.6 m 25'											* 7250	* 7250
6.1 m 20'							* 8890	7600			* 15900	* 15900
4.6 m 15'					* 10740	10260	* 9370	7430			* 7100	5750
3.0 m 10'					* 23600	22600	* 20600	16300			* 15600	12600
1.5 m 5'			* 16210	14630	* 12090	9790	* 10030	7200	8240	5570	* 7380	5390
0 m 0'			* 35700	32200	* 26600	21500	* 22100	15800	18100	12200	* 16200	11800
-1.5 m -5'	* 13710	* 13710	* 17720	13380	* 13480	8980	10240	6730			8570	5710
-3.0 m -10'	* 30200	* 30200	* 39000	29500	* 29700	19800	22500	14800			18800	12600
-4.6 m -15'	* 20540	* 20540	* 15850	13490	* 12300	9010	* 9440	6780			* 8870	6490
	* 45200	* 45200	* 34900	29700	* 27100	19800	* 20800	14900			* 19500	14300
	* 15670	* 15670	* 12560	12560	* 9590	9210					* 8350	8250
	* 34500	* 34500	* 27600	27600	* 21100	20300					* 18400	18100

*Load is limited by hydraulic capacity rather than tipping. Ratings are based on ISO standard No. 10567. Rated loads do not exceed 87% of hydraulic lift capacity or 75% of tipping load.



- A: Reach from swing center
- B: Bucket hook height
- C: Lifting capacity
- Cf: Rating over front
- Cs: Rating over side
- ⊗ : Rating at maximum reach

- Conditions :
- 6500 mm 21' 3" one-piece boom
 - Bucket: None
 - Lifting mode: On

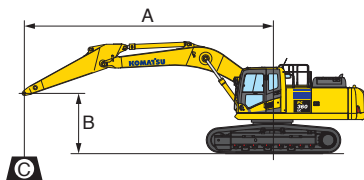
Arm: 3185 mm 10'5" Shoes: 850 mm 33.5" Unit: kg lb

B \ A	3.0 m 10'		4.6 m 15'		6.1 m 20'		7.6 m 25'		9.1 m 30'		⊗ MAX	
	Cf	Cs	Cf	Cs	Cf	Cs	Cf	Cs	Cf	Cs	Cf	Cs
7.6 m 25'											* 7250	* 7250
6.1 m 20'							* 8890	7630			* 15900	* 15900
4.6 m 15'					* 10740	10300	* 9370	7460			* 7100	5770
3.0 m 10'					* 23600	22700	* 20600	16400			* 15600	12700
1.5 m 5'			* 16210	14690	* 12090	9830	* 10030	7230	8280	5590	* 7380	5410
0 m 0'			* 35700	32300	* 26600	21600	* 22100	15900	18200	12300	* 16200	11900
-1.5 m -5'	* 13710	* 13710	* 17720	13450	* 13480	9020	10290	6770			8610	5740
-3.0 m -10'	* 30200	* 30200	* 39000	29600	* 29700	19900	22700	14900			18900	12600
-4.6 m -15'	* 20540	* 20540	* 15850	13550	* 12300	9050	* 9440	6810			* 8870	6520
	* 45200	* 45200	* 34900	29800	* 27100	19900	* 20800	15000			* 19500	14300
	* 15670	* 15670	* 12560	12560	* 9590	9260					* 8350	8290
	* 34500	* 34500	* 27600	27600	* 21100	20400					* 18400	18200

*Load is limited by hydraulic capacity rather than tipping. Ratings are based on ISO standard No. 10567. Rated loads do not exceed 87% of hydraulic lift capacity or 75% of tipping load.



LIFTING CAPACITY WITH LIFTING MODE



- A: Reach from swing center
- B: Bucket hook height
- C: Lifting capacity
- Cf: Rating over front
- Cs: Rating over side
- ⊗: Rating at maximum reach

- Conditions :
- 6500 mm 21' 3" one-piece boom
 - Bucket: None
 - Lifting mode: On

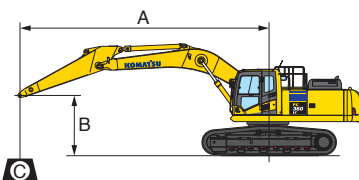
Arm: 4020 mm 13'2"

Shoes: 800 mm 31.5"

Unit: kg lb

B \ A	3.0 m 10'		4.6 m 15'		6.1 m 20'		7.6 m 25'		9.1 m 30'		⊗ MAX	
	Cf	Cs	Cf	Cs	Cf	Cs	Cf	Cs	Cf	Cs	Cf	Cs
7.6 m 25'							* 7750	* 7750			* 5610	* 5610
							* 17000	* 17000			* 12300	* 12300
6.1 m 20'							* 7950	7680	* 6550	5740	* 5460	* 5460
							* 17500	16900	* 14400	12600	* 12000	* 12000
4.6 m 15'							* 8520	7470	* 7870	5660	* 5470	4980
							* 18700	16400	* 17300	12400	* 12000	10900
3.0 m 10'			* 14340	* 14340	* 11020	9870	* 9280	7190	8210	5520	* 5640	4700
			* 31600	* 31600	* 24300	21700	* 20400	15800	18100	12100	* 12400	10300
1.5 m 5'			* 16890	13900	* 12370	9350	* 10010	6900	8040	5370	* 5950	4590
			* 37200	30600	* 27200	20600	* 22000	15200	17700	11800	* 13100	10100
0 m 0'	* 8320	* 8320	* 18090	13270	* 13230	8960	10200	6670	7910	5240	* 6480	4640
	* 18300	* 18300	* 39800	29200	* 29100	19700	22500	14700	17400	11500	* 14200	10200
-1.5 m -5'	* 12420	12420	* 17980	13030	* 13400	8740	10050	6530	7840	5180	* 7330	4890
	* 27300	27300	* 39600	28700	* 29500	19200	22100	14400	17200	11400	* 16100	10700
-3.0 m -10'	* 17840	* 17840	* 16780	13030	* 12760	8700	* 10020	6510			* 8040	5410
	* 39300	* 39300	* 37000	28700	* 28100	19100	* 22000	14300			* 17700	11900
-4.6 m -15'	* 19190	* 19190	* 14360	13230	* 11040	8810	* 8190	6640			* 7850	6480
	* 42300	* 42300	* 31600	29100	* 24300	19400	* 18000	14600			* 17300	14300

*Load is limited by hydraulic capacity rather than tipping. Ratings are based on ISO standard No. 10567. Rated loads do not exceed 87% of hydraulic lift capacity or 75% of tipping load.



- A: Reach from swing center
- B: Bucket hook height
- C: Lifting capacity
- Cf: Rating over front
- Cs: Rating over side
- ⊗: Rating at maximum reach

- Conditions :
- 6500 mm 21' 3" one-piece boom
 - Bucket: None
 - Lifting mode: On

Arm: 4020 mm 13'2"

Shoes: 850 mm 33.5"

Unit: kg lb

B \ A	3.0 m 10'		4.6 m 15'		6.1 m 20'		7.6 m 25'		9.1 m 30'		⊗ MAX	
	Cf	Cs	Cf	Cs	Cf	Cs	Cf	Cs	Cf	Cs	Cf	Cs
7.6 m 25'							* 7750	* 7750			* 5610	* 5610
							* 17000	* 17000			* 12300	* 12300
6.1 m 20'							* 7950	7720	* 6550	5770	* 5460	* 5460
							* 17500	17000	* 14400	12700	* 12000	* 12000
4.6 m 15'							* 8520	7500	* 7870	5690	* 5470	5010
							* 18700	16500	* 17300	12500	* 12000	11000
3.0 m 10'			* 14340	* 14340	* 11020	9910	* 9280	7220	* 8220	5550	* 5640	4720
			* 31600	* 31600	* 24300	21800	* 20400	15900	* 18100	12200	* 12400	10400
1.5 m 5'			* 16890	13960	* 12370	9390	* 10010	6940	8080	5400	* 5950	4610
			* 37200	30700	* 27200	20700	* 22000	15300	17800	11900	* 13100	10100
0 m 0'	* 8320	* 8320	* 18090	13330	* 13230	9000	10250	6710	7950	5270	* 6480	4660
	* 18300	* 18300	* 39800	29400	* 29100	19800	22600	14700	17500	11600	* 14200	10200
-1.5 m -5'	* 12420	* 12420	* 17980	13090	* 13400	8790	10100	6570	7880	5200	* 7330	4910
	* 27300	* 27300	* 39600	28800	* 29500	19300	22200	14400	17300	11400	* 16100	10800
-3.0 m -10'	* 17840	* 17840	* 16780	13090	* 12760	8740	10020	6540			* 8040	5440
	* 39300	* 39300	* 37000	28800	* 28100	19200	22000	14400			* 17700	11900
-4.6 m -15'	* 19190	* 19190	* 14360	13290	* 11040	8860	8190	6670			* 7850	6520
	* 42300	* 42300	* 31600	29300	* 24300	19500	18000	14700			* 17300	14300

*Load is limited by hydraulic capacity rather than tipping. Ratings are based on ISO standard No. 10567. Rated loads do not exceed 87% of hydraulic lift capacity or 75% of tipping load.



STANDARD EQUIPMENT

- Alternator, 60 Ampere, 24 V
- AM/FM radio
- Automatic engine warm-up system
- Automatic air conditioner/heater
- Auxiliary input (3.5mm jack)
- Batteries, large capacity
- Battery disconnect switch
- Boom and arm holding valves
- Converter, (2) x 12 V
- Counterweight, 7090 kg **15,631 lb**
- Dry type air cleaner, double element
- Electric horn
- EMMS monitoring system
- Engine, Komatsu SAA6D114E-5
- Engine overheat prevention system
- Extended work equipment grease interval
- Fan guard structure
- Fuel system pre-cleaner 10 micron
- High back air suspension seat, with heat
- Hydraulic track adjusters
- KOMTRAX® Level 4.0
- Large LCD color monitor, high resolution
- Lock lever
- Mirrors, (LH and RH)
- Operator Protective Top Guard (OPG), Level 1
- Pattern change valve (ISO to BH control)
- Power maximizing system
- PPC hydraulic control system
- Pump/engine room partition cover
- Radiator and oil cooler dustproof net
- Rear reflectors
- Rearview monitoring system (1 camera)
- Revolving frame deck guard
- Revolving frame undercovers
- ROPS cab
- Seat belt, retractable, 76 mm **3"**
- Seat belt indicator
- Secondary engine shutoff switch
- Service valve
- Shoes, triple grouser, 800 mm **31.5"**
- Skylight
- Slip resistant foot plates
- Starter motor, 11.0 kW/24 V x 1
- Suction fan
- Thermal and fan guards
- Track frame undercover
- Travel alarm
- Working lights, 2 (boom and RH front)
- Working mode selection system



OPTIONAL EQUIPMENT

- (1) additional rearview camera
- Arms
 - 2540 mm **8'4"** arm assembly
 - 3185 mm **10'5"** arm assembly
 - 3185 mm **10'5"** arm assembly with piping
 - 4020 mm **13'2"** arm assembly
 - 4020 mm **13'2"** arm assembly with piping
- Booms
 - 6500 mm **21'3"** HD boom assembly
 - 6500 mm **21'3"** HD boom assembly with piping
- Cab guards
 - Full front guard, OPG Level 1
 - Full front guard, OPG Level 2
 - Bolt-on top guard, OPG Level 2
 - Lower front window guard
- High pressure in-line hydraulic filters
- Hydraulic control unit, 1 actuator
- Rain visor
- Revolving frame undercovers, heavy duty
- Shoes, triple grouser, 700 mm **28"**
- Shoes, triple grouser, 850 mm **33.5"**
- Sun visor
- Straight travel pedal
- Track roller guards, full length
- Working light, front, one additional



ATTACHMENT OPTIONS

- Cab air pre-cleaner
- Grade control systems
- Hydraulic couplers
- Hydraulic kits, field installed
- Super long fronts
- PSM thumbs
- Rockland thumbs
- Vandalism protection guards with storage box

For a complete list of available attachments, please contact your local Komatsu distributor.