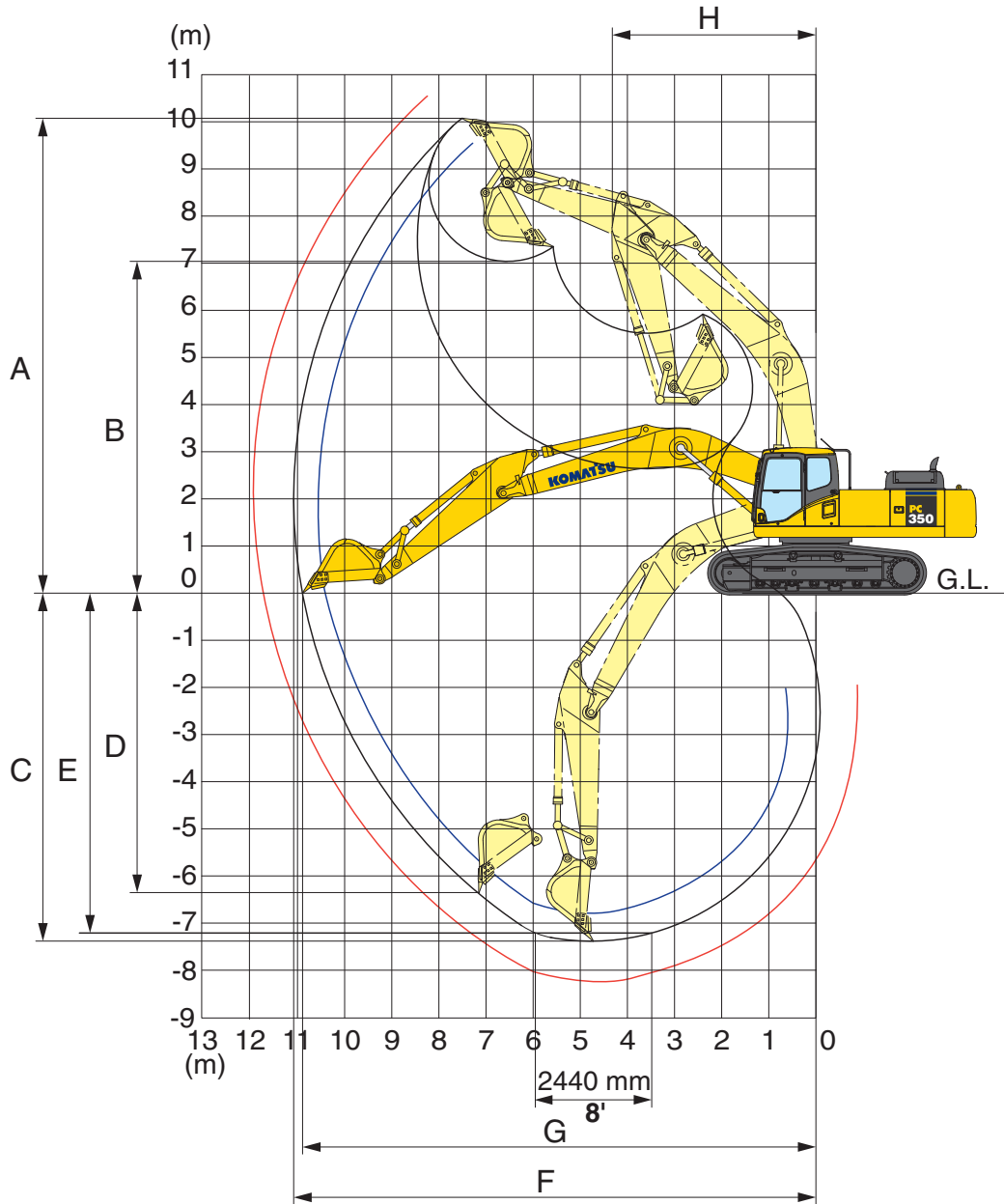


WORKING RANGES



WORKING RANGE

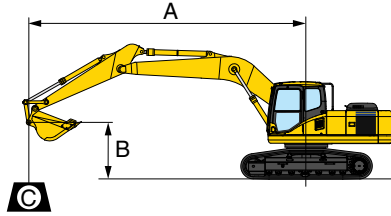


	Arm	2540 mm 8'4"	3185 mm 10'5"	4020 mm 13'2"
A	Max. digging height	9965 mm 32'8"	10210 mm 33'6"	10550 mm 34'7"
B	Max. dumping height	6895 mm 22'7"	7110 mm 23'4"	7490 mm 24'7"
C	Max. digging depth	6705 mm 22'0"	7380 mm 24'3"	8180 mm 26'10"
D	Max. vertical wall digging depth	5880 mm 19'4"	6480 mm 21'3"	7280 mm 23'11"
E	Max. digging depth of cut for 8' level	6520 mm 21'5"	7180 mm 23'7"	8045 mm 26'5"
F	Max. digging reach	10550 mm 34'7"	11100 mm 36'5"	11900 mm 39'1"
G	Max. digging reach at ground level	10355 mm 34'0"	10920 mm 35'10"	11730 mm 38'6"
H	Min. swing radius	4400 mm 14'5"	4310 mm 14'2"	4320 mm 14'2"

LIFTING CAPACITIES



LIFTING CAPACITY



- A: Reach from swing center
- B: Bucket hook height
- C: Lifting capacity
- Cf: Rating over front
- Cs: Rating over side
- ⊗ : Rating at maximum reach

Conditions:

- Arm: 2540 mm 8'4"
- Boom length: 6500 mm 21'3"
- Bucket: 1.4 m³ 1.83 yd³ (SAE heaped)
- Bucket weight: 1014 kg 2,235 lb

PC350LC-8		Shoe 800 mm 31.5"										Unit: kg/lb	
B	A MAX	3.0 m 10'		4.6 m 15'		6.1 m 20'		7.6 m 25'		9.1 m 30'		⊗ MAX	
		Cf	Cs	Cf	Cs	Cf	Cs	Cf	Cs	Cf	Cs	Cf	Cs
7.6 m 25'	7.1 m 23'											*7600 *16,800	7600 16,800
6.1 m 20'	8.1 m 26'							*7850 *17,300	6600 14,600			*7450 *16,400	5950 13,100
4.6 m 15'	8.7 m 28'			*12650 *27,800	*12650 *27,800	*9750 *21,500	9250 20,400	*8250 *18,100	6450 14,200			*7650 *16,800	5100 11,300
3.0 m 10'	9.0 m 29'			*15100 *33,300	13500 29,800	*11050 *24,400	8750 19,300	*8900 *19,700	6150 13,600	7250 16,000	4550 10,000	7450 16,400	4700 10,300
1.5 m 5'	9.0 m 30'			*15100 *33,300	12650 27,800	*12100 *26,700	8300 18,300	*9400 *20,700	5950 13,100	7150 15,700	4450 9,800	7250 16,000	4550 10,000
0 m 0'	8.8 m 29'			*16000 *35,300	12300 27,200	*12400 *27,300	8000 17,700	9300 20,500	5750 12,700	7050 15,600	4350 9,600	7450 16,500	4600 10,200
-1.5 m -5'	8.3 m 27'			*15950 *35,200	12350 27,300	*12050 *26,600	7900 17,400	9250 20,400	5700 12,600			*8100 *17,800	5050 11,100
-3.0 m -10'	7.5 m 24'	*17050 *37,600	*17050 *37,600	*14050 *31,000	12550 27,700	*10800 *23,800	8000 17,600	*7800 *17,200	5800 12,700			*8000 *17,700	5950 13,100
-4.6 m -15'	6.1 m 20'	*12800 *28,200	*12800 *28,200	*10750 *23,700	*10750 *23,700	*7900 *17,400	*7900 *17,400					*7350 *16,300	*7350 *16,300

PC350LC-8		Shoe 850 mm 33.5"										Unit: kg/lb	
B	A MAX	3.0 m 10'		4.6 m 15'		6.1 m 20'		7.6 m 25'		9.1 m 30'		⊗ MAX	
		Cf	Cs	Cf	Cs	Cf	Cs	Cf	Cs	Cf	Cs	Cf	Cs
7.6 m 25'	7.1 m 23'											*7600 *16,800	*7600 *16,800
6.1 m 20'	8.1 m 26'							*7850 *17,300	6650 14,700			*7450 *16,400	6000 13,200
4.6 m 15'	8.7 m 28'			*12650 *27,800	*12650 *27,800	*9750 *21,500	9300 20,500	*8250 *18,100	6450 14,300			*7650 *16,800	5150 11,300
3.0 m 10'	9.0 m 29'			*15100 *33,300	13600 30,000	*11050 *24,400	8800 19,400	*8900 *19,700	6200 13,700	7300 16,100	4600 10,100	7500 16,500	4700 10,400
1.5 m 5'	9.0 m 30'			*15100 *33,300	12700 28,000	*12100 *26,700	8350 18,400	*9400 *20,700	5950 13,100	7200 15,800	4450 9,900	7300 16,100	4550 10,000
0 m 0'	8.8 m 29'			*16000 *35,300	12400 27,300	*12400 *27,300	8050 17,800	9350 20,700	5800 12,800	7100 15,700	4400 9,700	7500 16,600	4650 10,300
-1.5 m -5'	8.3 m 27'			*15950 *35,200	12450 27,400	*12050 *26,600	7950 17,500	*9250 *20,400	5750 12,600			*8100 *17,800	5050 11,200
-3.0 m -10'	7.5 m 24'	*17050 *37,600	*17050 *37,600	*14050 *31,000	12600 27,800	*10800 *23,800	8050 17,700	*7800 *17,200	5800 12,800			*8000 *17,700	6000 13,200
-4.6 m -15'	6.1 m 20'	*12800 *28,200	*12800 *28,200	*10750 *23,700	*10750 *23,700	*7900 *17,400	*7900 *17,400					*7350 *16,300	*7350 *16,300

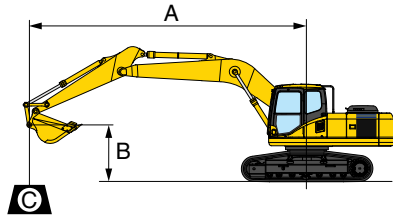
*Load is limited by hydraulic capacity rather than tipping. Ratings are based on SAE standard No. J1097. Rated loads do not exceed 87% of hydraulic lift capacity or 75% of tipping load.

PC350LC-8 HYDRAULIC EXCAVATOR

LIFTING CAPACITIES



LIFTING CAPACITY



- A: Reach from swing center
- B: Bucket hook height
- C: Lifting capacity
- Cf: Rating over front
- Cs: Rating over side
- ⊗ : Rating at maximum reach

Conditions:

- Arm: 3185 mm **10'5"**
- Boom length: 6500 mm **21'3"**
- Bucket: 1.4 m³ **1.83 yd³** (SAE heaped)
- Bucket weight: 1014 kg **2,235 lb**

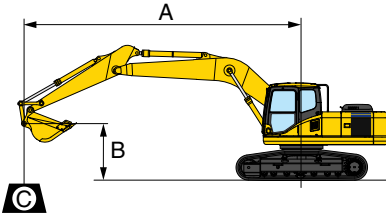
PC350LC-8		Shoe 700 mm 28"										Unit: kg/lb		
A	B	MAX	3.0 m 10'		4.6 m 15'		6.1 m 20'		7.6 m 25'		9.1 m 30'		⊗ MAX	
			Cf	Cs	Cf	Cs	Cf	Cs	Cf	Cs	Cf	Cs	Cf	Cs
7.6 m 25'	7.7 m 25'								*6050 *13,400	*6050 *13,400			*5350 *11,800	*5350 *11,800
6.1 m 20'	8.7 m 28'								*7200 *15,800	6700 14,700			*5250 *11,600	5250 11,600
4.6 m 15'	9.2 m 30'					*9050 *19,900	*9050 *19,900	*7700 *17,000	6500 14,300	*6850 *15,100	4650 10,300		*5350 *11,800	4550 10,100
3.0 m 10'	9.5 m 31'			*14550 *32,100	13900 30,600	*10450 *23,000	8850 19,500	*8500 *18,700	6200 13,700	7200 15,900	4550 10,000		*5700 *12,500	4200 9,300
1.5 m 5'	9.6 m 31'			*16850 *37,200	12850 28,400	*11750 *25,900	8350 18,500	*9150 *20,100	5950 13,100	7050 15,600	4400 9,700		*6250 *13,800	4050 9,000
0 m 0'	9.4 m 31'			*17200 *37,900	12350 27,200	*12350 *27,200	8000 17,700	9250 20,400	5700 12,600	6950 15,300	4300 9,500		6700 14,700	4150 9,100
-1.5 m -5'	8.9 m 29'	*9950 *21,900	*9950 *21,900	*16700 *36,800	12200 26,900	*12300 *27,100	7850 17,300	9100 20,100	5600 12,400	6900 15,200	4250 9,400		7200 15,800	4450 9,800
-3.0 m -10'	8.1 m 27'	*17800 *39,200	*17800 *39,200	*15200 *33,500	12350 27,200	*11450 *25,300	7850 17,300	*8650 *19,100	5600 12,400				*7700 *16,900	5100 11,300
-4.6 m -15'	6.9 m 23'	*16150 *35,700	*16150 *35,700	*12500 *27,600	12500 27,500	*9400 *20,800	8050 17,700						*7500 *16,500	6650 14,600
-6.1 m -20'	6.4 m 21'			*7550 *16,700	*7550 *16,700									

PC350LC-8		Shoe 800 mm 31.5"										Unit: kg/lb		
A	B	MAX	3.0 m 10'		4.6 m 15'		6.1 m 20'		7.6 m 25'		9.1 m 30'		⊗ MAX	
			Cf	Cs	Cf	Cs	Cf	Cs	Cf	Cs	Cf	Cs	Cf	Cs
7.6 m 25'	7.7 m 25'								*6050 *13,400	*6050 *13,400			*5350 *11,800	*5350 *11,800
6.1 m 20'	8.7 m 28'								*7200 *15,800	6750 14,900			*5250 *11,600	*5250 *11,600
4.6 m 15'	9.2 m 30'					*9050 *19,900	*9050 *19,900	*7700 *17,000	6550 14,400	*6850 *15,100	4750 10,400		*5350 *11,800	4600 10,200
3.0 m 10'	9.5 m 31'			*14550 *32,100	*13950 *30,700	*10450 *23,000	8950 19,700	*8500 *18,700	6250 13,800	*7300 *16,100	4600 10,200		*5700 *12,500	4250 9,400
1.5 m 5'	9.6 m 31'			*16850 *37,200	13000 28,700	*11750 *25,900	8450 18,600	*9150 *20,100	6000 13,200	7150 15,800	4450 9,800		*6250 *13,800	4100 9,100
0 m 0'	9.4 m 31'			*17200 *37,900	12450 27,500	*12350 *27,200	8100 17,900	9350 20,600	5800 12,800	7050 15,500	4350 9,600		6750 14,900	4200 9,200
-1.5 m -5'	8.9 m 29'	*9950 *21,900	*9950 *21,900	*16700 *36,800	12350 27,200	*12300 *27,100	7950 17,500	9200 20,300	5650 12,500	7000 15,400	4300 9,500		7250 16,000	4500 9,900
-3.0 m -10'	8.1 m 27'	*17800 *39,200	*17800 *39,200	*15200 *33,500	12450 27,500	*11450 *25,300	7950 17,500	*8650 *19,100	5700 12,500				*7700 *16,900	5200 11,400
-4.6 m -15'	6.9 m 23'	*16150 *35,700	*16150 *35,700	*12500 *27,600	*12500 *27,600	*9400 *20,800	8100 17,900						*7500 *16,500	6700 14,800
-6.1 m -20'	6.4 m 21'			*7550 *16,700	*7550 *16,700									

*Load is limited by hydraulic capacity rather than tipping. Ratings are based on SAE standard No. J1097. Rated loads do not exceed 87% of hydraulic lift capacity or 75% of tipping load.



LIFTING CAPACITY



- A: Reach from swing center
- B: Bucket hook height
- C: Lifting capacity
- Cf: Rating over front
- Cs: Rating over side
- ⊗: Rating at maximum reach

Conditions:

- Arm: 3185 mm **10'5"**
- Boom length: 6500 mm **21'3"**
- Bucket: 1.4 m³ **1.83 yd³** (SAE heaped)
- Bucket weight: 1014 kg **2,235 lb**

PC350LC-8		Shoe 850 mm 33.5"										Unit: kg/lb	
A B	MAX	3.0 m 10'		4.6 m 15'		6.1 m 20'		7.6 m 25'		9.1 m 30'		⊗ MAX	
		Cf	Cs	Cf	Cs	Cf	Cs	Cf	Cs	Cf	Cs	Cf	Cs
7.6 m 25'	7.7 m 25'							*6050 *13,400	*6050 *13,400			*5350 *11,800	*5350 *11,800
6.1 m 20'	8.7 m 28'							*7200 *15,800	6800 15,000			*5250 *11,600	*5250 *11,600
4.6 m 15'	9.2 m 30'					*9050 *19,900	*9050 *19,900	*7700 *17,000	6600 14,500	*6850 *15,100	4750 10,500	*5350 *11,800	4650 10,200
3.0 m 10'	9.5 m 31'			*14550 *32,100	*13950 *30,700	*10450 *23,000	9000 19,800	*8500 *18,700	6300 13,900	*7300 *16,100	4650 10,200	*5700 *12,500	4300 9,400
1.5 m 5'	9.6 m 31'			*16850 *37,200	13050 28,800	*11750 *25,900	8500 18,700	*9150 *20,100	6000 13,300	7200 15,900	4500 9,900	*6250 *13,800	4150 9,100
0 m 0'	9.4 m 31'			*17200 *37,900	12550 27,600	*12350 *27,200	8150 18,000	9400 20,700	5800 12,800	7100 15,600	4350 9,700	6800 15,000	4200 9,300
-1.5 m -5'	8.9 m 29'	*9950 *21,900	*9950 *21,900	*16700 *36,800	12400 27,300	*12300 *27,100	7950 17,600	9250 20,500	5700 12,600	7050 15,500	4350 9,600	7300 16,100	4500 9,900
-3.0 m -10'	8.1 m 27'	*17800 *39,200	*17800 *39,200	*15200 *33,500	12500 27,600	*11450 *25,300	8000 17,600	*8650 *19,100	5700 12,600			*7700 *16,900	5200 11,500
-4.6 m -15'	6.9 m 23'	*16150 *35,700	*16150 *35,700	*12500 *27,600	*12500 *27,600	*9400 *20,800	8150 18,000					*7500 *16,500	6750 14,900
-6.1 m -20'	6.4 m 21'			*7550 *16,700	*7550 *16,700								

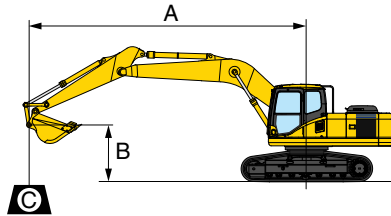
*Load is limited by hydraulic capacity rather than tipping. Ratings are based on SAE standard No. J1097. Rated loads do not exceed 87% of hydraulic lift capacity or 75% of tipping load.

PC350LC-8 HYDRAULIC EXCAVATOR

LIFTING CAPACITIES



LIFTING CAPACITY



- A: Reach from swing center
- B: Bucket hook height
- C: Lifting capacity
- Cf: Rating over front
- Cs: Rating over side
- ⊗: Rating at maximum reach

Conditions:

- Arm: 4020 mm 13'2"
- Boom length: 6500 mm 21'3"
- Bucket: 1.4 m³ 1.83 yd³ (SAE heaped)
- Bucket weight: 1014 kg 2,235 lb

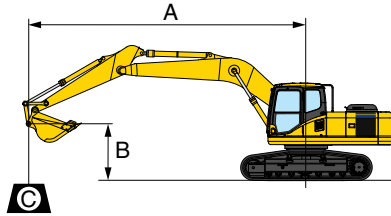
PC350LC-8		Shoe 700 mm 28"												Unit: kg/lb		
B	A MAX	1.5 m 5'		3.0 m 10'		4.6 m 15'		6.1 m 20'		7.6 m 25'		9.1 m 30'		⊗ MAX		
		Cf	Cs	Cf	Cs	Cf	Cs	Cf	Cs	Cf	Cs	Cf	Cs			
7.6 m 25'	8.8 m 29'														*4150 *9,200	*4150 *9,200
6.1 m 20'	9.6 m 31'											*5850 *12,900	4950 10,900	*4050 *9,000	*4050 *9,000	
4.6 m 15'	10.1 m 33'									*7000 *15,500	6700 14,800	*6450 *14,200	4850 10,700	*4100 *9,100	3950 8,800	
3.0 m 10'	10.4 m 34'					*12600 *27,800	*12600 *27,800	*9450 *20,900	9100 20,100	*7900 *17,400	6350 14,100	*6850 *15,100	4700 10,300	*4300 *9,500	3700 8,100	
1.5 m 5'	10.4 m 34'					*15550 *34,300	13200 29,100	*10950 *24,200	8550 18,800	*8650 *19,100	6050 13,300	7150 15,800	4500 9,900	*4650 *10,200	3550 7,800	
0 m 0'	10.2 m 34'			*6100 *13,400	*6100 *13,400	*16850 *37,200	12400 27,300	*11950 *26,400	8050 17,800	*9250 *20,400	5750 12,700	7000 15,400	4300 9,500	*5150 *11,400	3600 7,900	
-1.5 m -5'	9.8 m 32'	*7000 *15,400	*7000 *15,400	*10000 *22,100	*10000 *22,100	*16900 *37,300	12000 26,500	*12250 *27,000	7800 17,100	9100 20,000	5550 12,300	6900 15,200	4200 9,300	*6000 *13,200	3800 8,400	
-3.0 m -10'	9.1 m 30'	*10100 *22,200	*10100 *22,200	*15900 *35,100	*15900 *35,100	*16050 *35,400	12000 26,400	*11900 *26,200	7700 17,000	9000 19,900	5500 12,200	6850 15,200	4200 9,300	*6950 *15,300	4250 9,400	
-4.6 m -15'	8.0 m 26'	*15200 *33,500	*15200 *33,500	*19500 *43,000	*19500 *43,000	*14100 *31,100	12200 26,900	*10600 *23,300	7800 17,200	*7850 *17,400	5600 12,400			*6950 *15,300	5200 11,400	
-6.1 m -20'	6.4 m 21'			*14000 *30,900	*14000 *30,900	*10550 *23,300	*10550 *23,300	*7650 *16,900	*7650 *16,900					*6450 *14,200	*6450 *14,200	

PC350LC-8		Shoe 800 mm 31.5"												Unit: kg/lb		
B	A MAX	1.5 m 5'		3.0 m 10'		4.6 m 15'		6.1 m 20'		7.6 m 25'		9.1 m 30'		⊗ MAX		
		Cf	Cs	Cf	Cs	Cf	Cs	Cf	Cs	Cf	Cs	Cf	Cs			
7.6 m 25'	8.8 m 29'														*4150 *9,200	*4150 *9,200
6.1 m 20'	9.6 m 31'											*5850 *12,900	5000 11,000	*4050 *9,000	*4050 *9,000	
4.6 m 15'	10.1 m 33'									*7000 *15,500	6750 14,900	*6450 *14,200	4900 10,800	*4100 *9,100	4000 8,900	
3.0 m 10'	10.4 m 34'					*12600 *27,800	*12600 *27,800	*9450 *20,900	9200 20,300	*7900 *17,400	6450 14,200	*6850 *15,100	4750 10,400	*4300 *9,500	3700 8,200	
1.5 m 5'	10.4 m 34'					*15550 *34,300	13350 29,400	*10950 *24,200	8600 19,000	*8650 *19,100	6100 13,400	7250 16,000	4550 10,000	*4650 *10,200	3600 7,900	
0 m 0'	10.2 m 34'			*6100 *13,400	*6100 *13,400	*16850 *37,200	12500 27,600	*11950 *26,400	8150 18,000	*9250 *20,400	5800 12,800	7050 15,600	4350 9,600	*5150 *11,400	3650 8,000	
-1.5 m -5'	9.8 m 32'	*7000 *15,400	*7000 *15,400	*10000 *22,100	*10000 *22,100	*16900 *37,300	12150 26,700	*12250 *27,000	7850 17,300	9200 20,300	5650 12,400	6950 15,400	4250 9,400	*6000 *13,200	3850 8,500	
-3.0 m -10'	9.1 m 30'	*10100 *22,200	*10100 *22,200	*15900 *35,100	*15900 *35,100	*16050 *35,400	12100 26,700	*11900 *26,200	7750 17,100	9100 20,100	5600 12,300	6950 15,300	4250 9,400	*6950 *15,300	4300 9,500	
-4.6 m -15'	8.0 m 26'	*15200 *33,500	*15200 *33,500	*19500 *43,000	*19500 *43,000	*14100 *31,100	12300 27,200	*10600 *23,300	7900 17,400	*7850 *17,400	5650 12,500			*6950 *15,300	5250 11,600	
-6.1 m -20'	6.4 m 21'			*14000 *30,900	*14000 *30,900	*10550 *23,300	*10550 *23,300	*7650 *16,900	*7650 *16,900					*6450 *14,200	*6450 *14,200	

*Load is limited by hydraulic capacity rather than tipping. Ratings are based on SAE standard No. J1097. Rated loads do not exceed 87% of hydraulic lift capacity or 75% of tipping load.



LIFTING CAPACITY



- A: Reach from swing center
- B: Bucket hook height
- C: Lifting capacity
- Cf: Rating over front
- Cs: Rating over side
- ⊗: Rating at maximum reach

Conditions:

- Arm: 4020 mm 13'2"
- Boom length: 6500 mm 21'3"
- Bucket: 1.4 m³ 1.83 yd³ (SAE heaped)
- Bucket weight: 1014 kg 2,235 lb

PC350LC-8		Shoe 850 mm 33.5"												Unit: kg/lb			
B	A	MAX	1.5 m 5'		3.0 m 10'		4.6 m 15'		6.1 m 20'		7.6 m 25'		9.1 m 30'		⊗ MAX		
			Cf	Cs	Cf	Cs	Cf	Cs	Cf	Cs	Cf	Cs	Cf	Cs			
7.6 m 25'	8.8 m 29'														*4150 *9,200	*4150 *9,200	
6.1 m 20'	9.6 m 31'													*5850 *12,900	5050 11,100	*4050 *9,000	*4050 *9,000
4.6 m 15'	10.1 m 33'										*7000 *15,500	6800 15,000	*6450 *14,200	4950 10,900	*4100 *9,100	4050 8,900	
3.0 m 10'	10.4 m 34'					*12600 *27,800	*12600 *27,800	*9450 *20,900	9250 20,400	*7900 *17,400	6450 14,300	*6850 *15,100	4750 10,500	*4300 *9,500	3750 8,300		
1.5 m 5'	10.4 m 34'					*15550 *34,300	13400 29,500	*10950 *24,200	8650 19,100	*8650 *19,100	6150 13,500	*7300 *16,100	4550 10,100	*4650 *10,200	3600 8,000		
0 m 0'	10.2 m 34'			*6100 *13,400	*6100 *13,400	*16850 *37,200	12550 27,700	*11950 *26,400	8200 18,100	*9250 *20,400	5850 12,900	7100 15,700	4400 9,700	*5150 *11,400	3650 8,100		
-1.5 m -5'	9.8 m 32'	*7000 *15,400	*7000 *15,400	*10000 *22,100	*10000 *22,100	*16900 *37,300	12200 26,900	*12250 *27,000	7900 17,400	9250 20,400	5650 12,500	7000 15,400	4300 9,500	*6000 *13,200	3850 8,500		
-3.0 m -10'	9.1 m 30'	*10100 *22,200	*10100 *22,200	*15900 *35,100	*15900 *35,100	*16050 *35,400	12200 26,900	*11900 *26,200	7800 17,200	*9150 *20,100	5600 12,400	*6950 *15,400	4300 9,500	*6950 *15,300	4350 9,500		
-4.6 m -15'	8.0 m 26'	*15200 *33,500	*15200 *33,500	*19500 *43,000	*19500 *43,000	*14100 *31,100	12400 27,300	*10600 *23,300	7900 17,500	*7850 *17,400	5700 12,600			*6950 *15,300	5300 11,600		
-6.1 m -20'	6.4 m 21'			*14000 *30,900	*14000 *30,900	*10550 *23,300	*10550 *23,300	*7650 *16,900	*7650 *16,900					*6450 *14,200	*6450 *14,200		

*Load is limited by hydraulic capacity rather than tipping. Ratings are based on SAE standard No. J1097. Rated loads do not exceed 87% of hydraulic lift capacity or 75% of tipping load.



STANDARD EQUIPMENT

- Alternator, 60 Ampere, 24 V
- AM/FM radio
- Auto-decel
- Automatic air conditioner with defroster
- Automatic engine warm-up system
- Batteries, 2 x 12 V, 150 AH
- Boom and arm holding valves
- Cab, damper mounted
- Counterweight 7371 kg **16,246 lb**
- Dry type air cleaner, double element
- Electric horn
- EMMS monitoring system
- Engine, Komatsu SAA6D114E-3
- Engine overheat prevention system
- Fan guard structure
- Fuel system 10 micron pre-filter
- High pressure in-line hydraulic filters
- Hydraulic track adjusters (each side)
- KOMTRAX®
- Large 7" TFT LCD monitor panel
- Operator Protective Top Guard (OPG), Level 1
- Pattern change valve
- Power maximizing system
- PPC hydraulic control system
- Radiator and oil cooler with net
- Rearview camera (1)
- Rearview mirrors (LH & RH (2 pieces))
- Revolving frame deck guard
- Revolving frame undercovers
- Seat belt, 76 mm **3"** retractable
- Seat, suspension
- Service valve (1 additional)
- Shoes, triple grouser: 800 mm **31.5"**
- Slip resistant foot plates
- Starting motor 11 kW/24V x 1
- Suction fan
- Track guiding guard, center section
- Travel alarm
- Two boom mode settings
- Undercover for track frame center
- Work lights, 2 (boom and RH front)
- Working mode selection system



OPTIONAL EQUIPMENT

- (1) Additional rearview camera, RH side
- Air-ride suspension seat
- Arms
 - 2540 mm **8'4"** arm assembly
 - 3185 mm **10'5"** arm assembly
 - 3185 mm **10'5"** with one actuator piping
 - 4020 mm **13'2"** arm assembly
- Boom
 - 6500 mm **21'3"** HD boom assembly
 - 6500 mm **21'3"** HD with one actuator piping
- Convertor, 12 V
- Full front guard Level 1
- Full front guard Level 2
- One actuator hydraulic control unit
- OPG top guard, Level 2, bolt-on
- Rain visor
- Revolving frame undercovers, heavy duty
- Shoes, triple grouser: 700 mm **28"**
- Shoes, triple grouser: 850 mm **33.5"**
- Straight travel pedal
- Sun visor
- Track frame undercover, heavy duty
- Track roller guards (full length)
- Work light, front, one additional



ATTACHMENT OPTIONS

- JRB attachments
 - Couplers
 - Smart-Loc
 - Versa-Loc
 - Vandal protection guards with storage box
 - Komatsu buckets
 - Lincoln autolube systems
 - PSM thumbs
 - Rockland thumbs
- For a complete list of available attachments, please contact your local Komatsu distributor.

KOMATSU®