

SY215C

PRODUCT SPECIFICATIONS



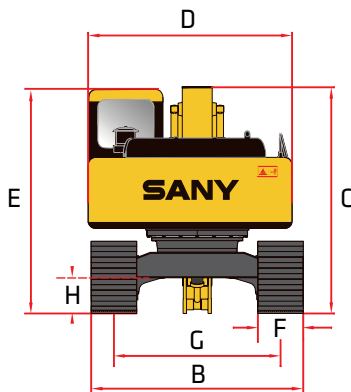
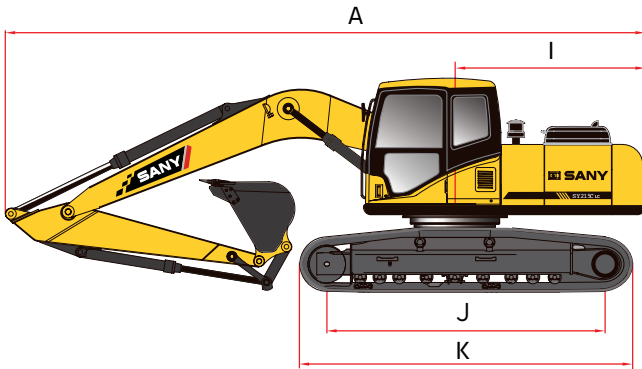
STANDARD FEATURES

- Powerful, robust and reliable powertrain and hydraulic components for long life in the most demanding applications
- Optimized positive flow control hydraulics improve operating efficiency by up to 5% and fuel efficiency by up to 10%

- ➔ **Gross Power**
122 kW / 163.6 hp
- ➔ **Dig Depth**
6600 mm / 21' 8"
- ➔ **Operating Weight**
23550 kg / 51,919 lb
- ➔ **Bucket Breakout**
127.0 kN / 28,551 lbf

SY215C || PRODUCT SPECIFICATIONS

DIMENSIONS



DIMENSIONS

Boom Length	5700 mm	18' 8"
Stick (Arm) Length	2925 mm	9' 7"
A Transport Length	9728 mm	31' 11"
B Transport Width	3180 mm	10' 5"
C Transport Height	3370 mm	11' 1"
D Upper Structure Width	2710 mm	8' 11"
E Cab Height	3050 mm	10' 0"
F Track Width (standard shoe)	800 mm	31"
G Track Gauge	2380 mm	7' 10"
H Ground Clearance (minimum)	480 mm	19"
I Tail Swing Radius	2890 mm	9' 6"
J Track Length on Ground	3640 mm	11' 11"
K Track Length	4450 mm	14' 7"

Powerful, robust and reliable powertrain and hydraulic components

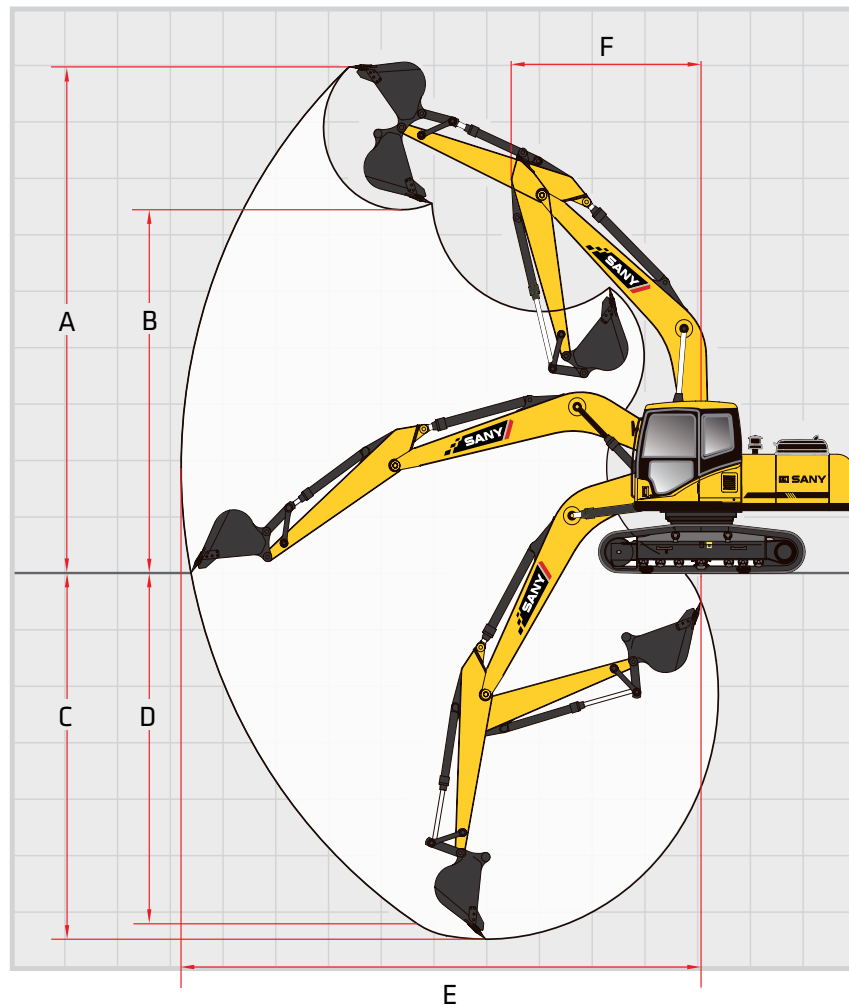
TECHNICAL SPECIFICATIONS

Operating Weight	23550 kg	51,919 lb
Ground Pressure	36.3 kPa	5.3 psi
Engine	Cummins QSB6.7	
Displacement	6.7 L	408.9 in ³
Gross Power	122 kW	163.6 HP
Hydraulics	Positive Flow Control with Pilot Control	
Main Hydraulic Pump	Axial Piston - Variable Displacement	
Operating Flow (maximum)	444.0 L/min	117.3 gal/min
Operating Pressure (maximum)	34.3 MPa	4975 psi
Power Boost Pressure (maximum)	37.3	5410 psi
Travel Motor	Axial Piston with Park Brake	
Travel Pressure (maximum)	34.3 MPa	4975 psi
Travel Speeds (maximum)	3.1 / 5.3 km/hr	1.9 / 3.3 mph
Travel Effort (maximum)	180.0 kN	40,466 lbf
Grade Capability (maximum)	35°	
Swing Motor	Axial Piston with Swing Brake	
Swing Pressure (maximum)	27.5 MPa	3989 psi
Swing Speed (maximum)	10.9 RPM	
Undercarriage (standard)	Steel Track	
Track Shoe width (standard)	800 mm	31"
Track Rollers (per side)	9	
Carrier Rollers (per side)	2	

SERVICE REFILL CAPACITIES

Fuel Tank Capacity	340.0 L	89.5 gal
DEF Tank Capacity	19.0 L	5.0 gal
Hydraulic Tank Capacity	230.0 L	60.5 gal
Engine Oil Capacity	27.0 L	7.1 gal
Cooling System Capacity	27.6 L	7.3 gal

WORKING RANGE



WORKING RANGE

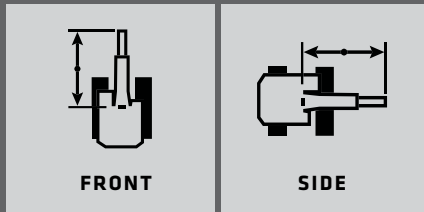
Boom Length	5700 mm	18' 8"
Stick (Arm) Length	2925 mm	9' 7"
A Maximum Digging Height	9180 mm	30' 1"
B Maximum Dumping Height	6670 mm	21' 11"
C Maximum Digging Depth	6600 mm	21' 8"
D Maximum Vertical Wall Digging Depth	5980 mm	19' 7"
E Maximum Reach at Ground Level	10307 mm	33' 10"
F Minimum Swing Radius	3730 mm	12' 3"

DIGGING PERFORMANCE

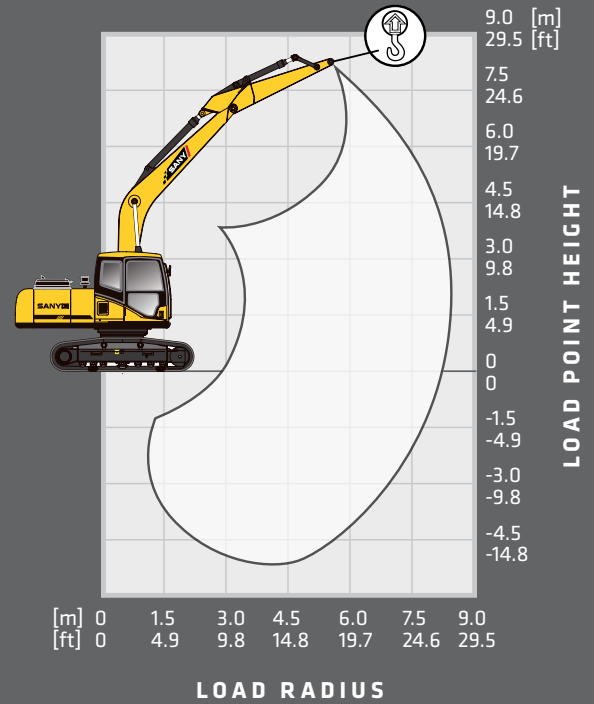
Boom Length	5700 mm	18' 8"
Stick (Arm) Length	2925 mm	9' 7"
Bucket Breakout Force (ISO)	127.0 kN	28,551 lbf
Stick (Arm) Digging Force (ISO)	103.0 kN	23,155 lbf

SY215C || LIFTING PERFORMANCE

Standard 5700 mm (18' 8") Boom
 Standard 2925 mm (9' 7") Arm
 Standard 800 mm (31") Track Shoes
 No Bucket



Ratings are based on ISO 10567:2007. Lift capacity does not exceed 75% of tipping load with the machine on firm, level ground or 87% of hydraulic lifting capacity.



LOAD RADIUS	3.0 m 9.8 ft		4.5 m 14.8 ft		6.0 m 19.7 ft		7.5 m 24.6 ft		MAX REACH	
LOAD POINT HEIGHT										
7.5 m 24.6 ft					4267 kg* 9,407 lb*	4267 kg* 9,407 lb*			4746 kg* 10,463 lb*	4746 kg* 10,463 lb*
6.0 m 19.7 ft					4617 kg* 10,179 lb*	4617 kg* 10,179 lb*			4816 kg* 10,617 lb*	4350 kg 9,590 lb
4.5 m 14.8 ft					5159 kg* 11,374 lb*	5159 kg* 11,374 lb*	4936 kg* 10,882 lb*	4107 kg 9,054 lb	4959 kg* 10,933 lb*	3754 kg 8,276 lb
3.0 m 9.8 ft			7583 kg* 16,718 lb*	7583 kg* 16,718 lb*	6008 kg* 13,245 lb*	5480 kg 12,081 lb	5310 kg* 11,707 lb*	4004 kg 8,827 lb	5155 kg* 11,365 lb*	3357 kg 7,401 lb
1.5 m 4.9 ft			9288 kg* 20,477 lb*	7705 kg 16,987 lb	6893 kg* 15,196 lb*	5240 kg 11,552 lb	5763 kg* 12,705 lb*	3887 kg 8,569 lb	5036 kg 11,102 lb	3354 kg 7,394 lb
0 m 0 ft	6861 kg* 15,126 lb*	6861 kg* 15,126 lb*	10286 kg* 22,677 lb*	7429 kg 16,378 lb	7554 kg* 16,654 lb*	5069 kg 11,175 lb	5767 kg 12,714 lb	3799 kg 8,375 lb	5161 kg 11,378 lb	3419 kg 7,538 lb
-1.5 m -4.9 ft	10946 kg* 24,132 lb*	10946 kg* 24,132 lb*	10532 kg* 23,219 lb*	7346 kg 16,195 lb	7790 kg* 17,174 lb*	4994 kg 11,010 lb	5737 kg 12,648 lb	3771 kg 8,314 lb	4833 kg 10,655 lb	3694 kg 8,144 lb
-3.0 m -9.8 ft	14385 kg* 31,713 lb*	13964 kg 30,785 lb	10058 kg* 22,174 lb*	7401 kg 16,316 lb	7504 kg* 16,543 lb*	5023 kg 11,074 lb			6472 kg* 14,268 lb*	4345 kg 9,597 lb
-4.5 m -14.8 ft	11956 kg* 26,358 lb*	11956 kg* 26,358 lb*	8474 kg* 18,682 lb*	7615 kg 16,788 lb					6930 kg* 15,278 lb*	6066 kg 13,373 lb

* Indicates load limited by hydraulic lifting capacity