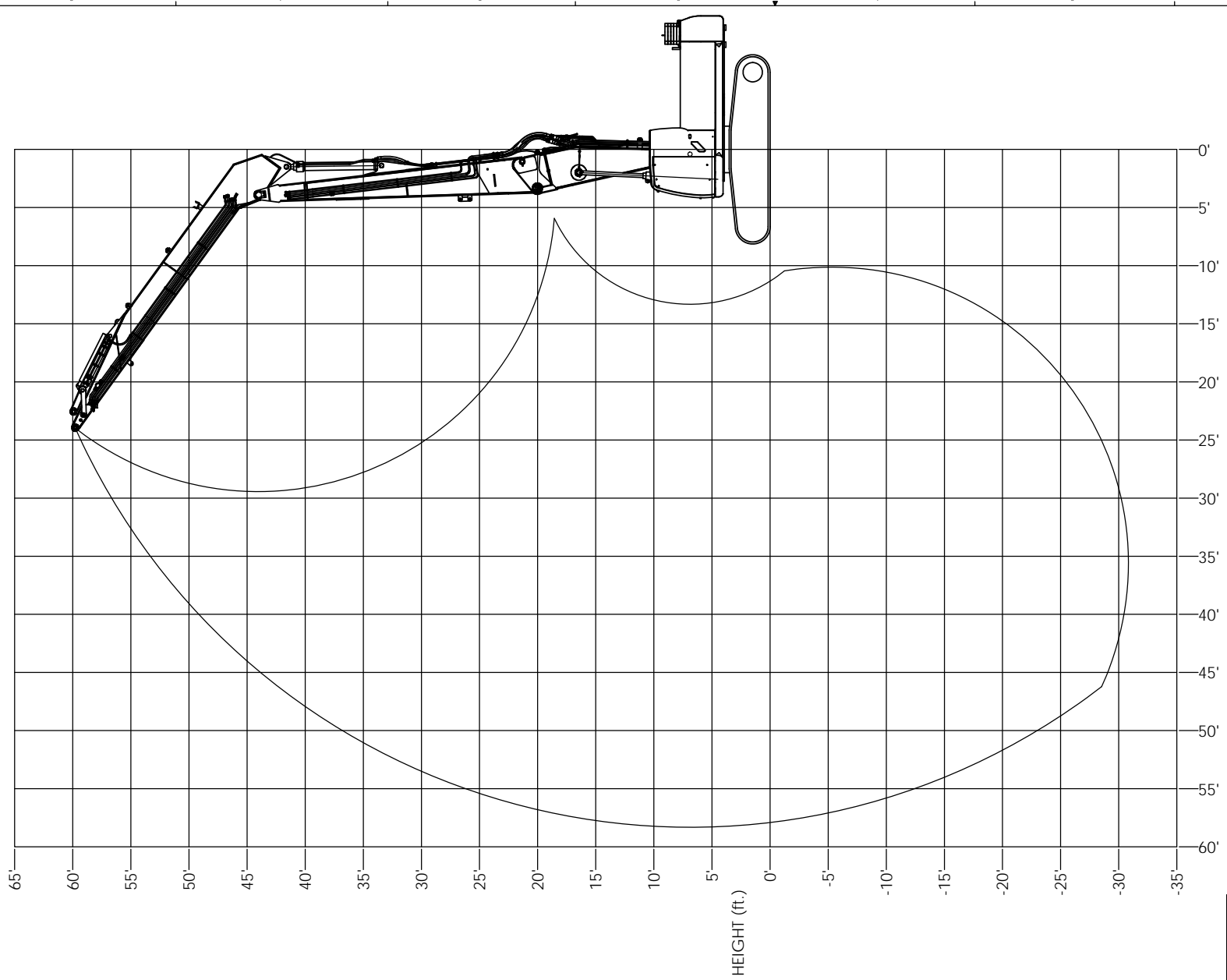


REVISIONS				
ZONE	REV.	DESCRIPTION	DATE	APPROVED



MATERIAL:		


 4805 SCOOPY LANE NW  
 CARROLL, OHIO 43112  
 740-654-5304  
*The Cutting Edge of Customer Service*

PROPRIETARY AND CONFIDENTIAL  
 THE INFORMATION CONTAINED HEREIN  
 IS THE SOLE PROPERTY OF  
 COMPANY WRENCH. ANY  
 REPRODUCTION OR USE OF THIS  
 INFORMATION WITHOUT THE WRITTEN PERMISSION OF  
 COMPANY WRENCH IS PROHIBITED.

UNLESS OTHERWISE SPECIFIED  
 DIMENSIONS TO DIMENSIONS ARE  
 AS FOLLOWS:  
 DECIMAL: .00015"  
 FRACTIONAL: 1/16"  
 ANGLE: .1°

TITLE: SK350LC-9 - 58' 2-PC. STUB ATTACH L.R. RANGE  
 SCALE: 1:50  
 SHEET 1 OF 1

SIZE: **D**  
 DWG./PART NO.: OM17003-1

**Lifting Capacities**  
P/N 0M17003-2



SK350LC-9  
2-Piece, Stub Attach  
58 Foot  
Long Reach Excavator

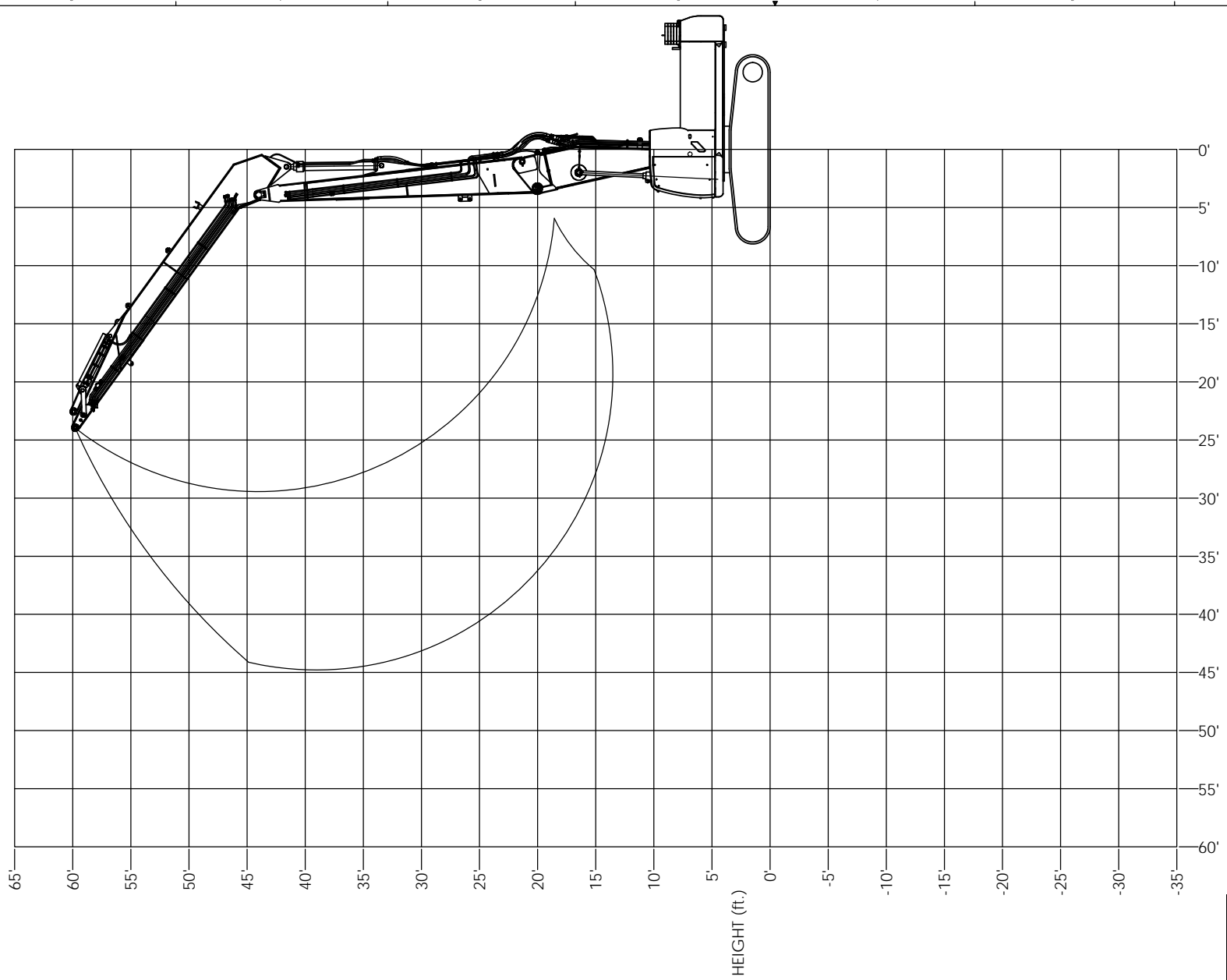
Lift capacities calculated at attachment pivot point on stick (lbs).  
No attachment on stick. Attachment weight must be subtracted.

REACH																						HEIGHT	
60'		55'		50'		45'		40'		35'		30'		25'		20'		15'		10'			
Side	Front	Side	Front	Side	Front	Side	Front	Side	Front	Side	Front	Side	Front	Side	Front	Side	Front	Side	Front	Side	Front		
																						60'	
																							55'
																							50'
																							45'
																							40'
																							35'
																							30'
																							25'
																							20'
																							15'
																							10'
																							5'
																							0'
																							-5'
																							-10'
																							-15'
																							-20'
																							-25'
																							-30'
																							-35'

The following notes pertain to this machine equipped with 31.5" wide track pads and 7,900# additional counterweight:

1. Do not attempt to lift or hold any load that exceeds these rated values at their specified load radii and heights.
2. The least stable position is over the side.
3. The operator should be fully acquainted with machine operation before operating the machine.
4. Lifting capacities assume a machine standing on level, firm and uniform supporting surface. Operator must make allowance for job conditions such as soft or uneven ground, out of level conditions, side loads, sudden stopping of loads, hazardous conditions, inexperienced personnel, etc.
5. The above theoretical ratings are based on calculations derived from standard O.E.M. lift charts. They do not exceed 87% of hydraulic lifting capacity or 75% of tipping capacity. Rated loads marked with an asterisk (\*) are limited by hydraulic lifting capacity.
6. Do not boom down with tool on the ground and front fully retracted, doing so may cause damage to machine.

REVISIONS				
ZONE	REV.	DESCRIPTION	DATE	APPROVED



MATERIAL:		


 4805 SCOOPY LANE NW  
 CARROLL, OHIO 43112  
 740-654-5304  
*The Cutting Edge of Customer Service*

PROPRIETARY AND CONFIDENTIAL  
 THE INFORMATION CONTAINED HEREIN  
 DRAWING IS THE SOLE PROPERTY OF  
 COMPANY WRENCH. ANY  
 REPRODUCTION OR TRANSMISSION OF THIS DRAWING  
 WITHOUT THE WRITTEN PERMISSION OF  
 COMPANY WRENCH IS PROHIBITED.

UNLESS OTHERWISE SPECIFIED  
 DIMENSIONS TO DIMENSIONS ARE  
 AS FOLLOWS:

DECIMAL:	1/16"
FRACTIONAL:	1/16"
ANGULAR:	1°

TITLE: SK350LC-9 - 60' 2-PC. STUB ATTACH H.R. RANGE  
 SCALE: 1:50  
 SHEET 1 OF 1

DWG./PART NO. 0M17003-3  
 SIZE **D**

**Lifting Capacities**  
P/N 0M17003-4



SK350LC-9  
2-Piece, Stub Attach  
60 Foot  
High Reach Excavator

**WARNING:** DO NOT OPERATE MACHINE OVER SIDE. OPERATE OVER FRONT ONLY WITH DRIVES TO THE REAR OF THE MACHINE.

Lift capacities calculated at attachment pivot point on stick (lbs).  
No attachment on stick. Attachment weight must be subtracted.

REACH										HEIGHT
55'	50'	45'	40'	35'	30'	25'	20'	15'	10'	
										60'
					* 6,670					55'
				* 6,625	* 7,474					50'
			* 6,439	* 7,321	* 7,628					45'
			* 7,242	* 7,660	* 7,675					40'
			* 7,823	* 8,014	* 7,857					35'
			* 8,486	* 8,608	* 8,387	* 7,913				30'
			* 9,445	* 9,687	* 9,594	* 9,164				25'
				* 11,650	* 12,192	* 12,579	* 12,745	* 12,451		20'
						* 20,157	* 25,779	* 35,412	* 16,148	15'
							* 26,271			10'
							* 24,057			5'
							* 18,127			0'

The following notes pertain to this machine equipped with 31.5" wide track pads and 7,900# additional counterweight:

1. Do not attempt to lift or hold any load that exceeds these rated values.
2. When working, the boom must be in the fully upright position. Maximum forward tilt of boom is 25 degrees.
3. Machine must never be operated over the side.
4. The operator should be fully acquainted with machine operation before operating the machine.
5. Lifting capacities assume a machine standing on level, firm and uniform supporting surface. Operator must make allowance for job conditions such as soft or uneven ground, out of level conditions, side loads, sudden stopping of loads, hazardous conditions, inexperienced personnel, etc.
6. The above theoretical ratings are based on calculations derived from standard O.E.M. lift charts based on SAE standard No. J1097. They do not exceed 87% of hydraulic lifting capacity or 75% of tipping capacity. Rated loads marked with an asterisk (\*) are limited by hydraulic lifting capacity.
7. Do not boom down with tool on the ground and front fully retracted, doing so may cause damage to machine.