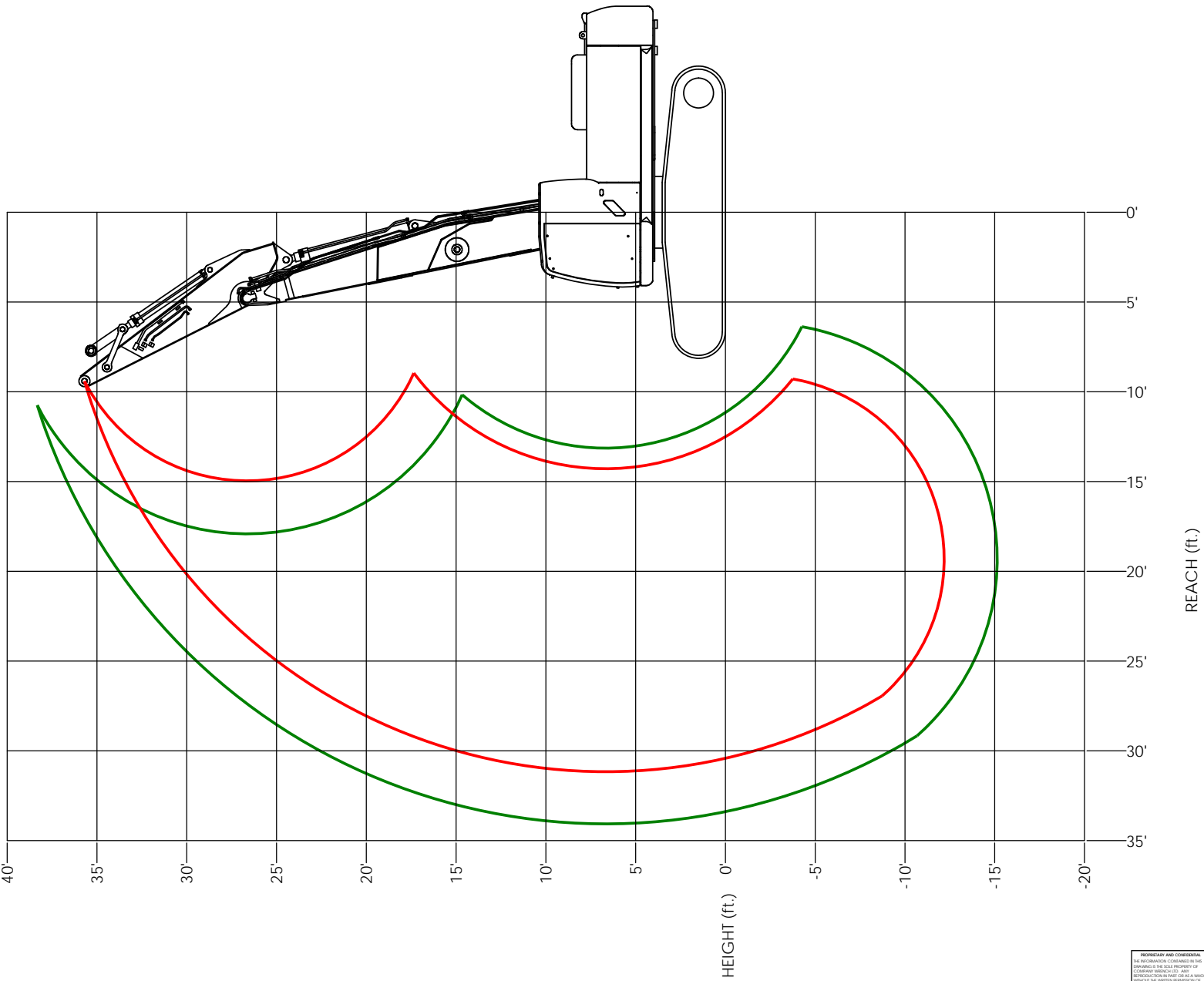


REVISIONS				
ZONE	REV.	DESCRIPTION	DATE	APPROVED



CONFIGURATIONS:
— 20'-4" STRAIGHT BOOM 10'-2" STICK
— 20'-4" STRAIGHT BOOM 13'-1" STICK

MATERIAL:		



4805 SCOOPY LANE NW
 CARROLL, OHIO 43112
 740-654-5304

The Cutting Edge of Customer Service

PROFESSIONAL AND CONFIDENTIAL
 THE INFORMATION CONTAINED HEREIN
 IS THE SOLE PROPERTY OF
 COMPANY WRENCH. ANY
 REPRODUCTION OR
 TRANSMISSION OF THIS
 INFORMATION WITHOUT THE WRITTEN PERMISSION OF
 COMPANY WRENCH IS PROHIBITED.

UNLESS OTHERWISE SPECIFIED
 DIMENSIONS TO DIMENSIONS ARE
 AS FOLLOWS:
 DECIMAL: .0001"
 FRACTIONAL: 1/16"
 ANGLE: .1°
 WEIGHT: #

TITLE: SK300-10 20'-4" STR. BOOM RANGE
 SCALE: 1:32
 SHEET 1 OF 1
 SIZE: D
 DWG./PART NO.: OM20945-1

Lifting Capacities

P/N: 0M20945-2

SK300LC
20'-4" Straight Boom
13'-1" Factory Stick



Lift capacities calculated at attachment pivot point on stick (lbs).
No attachment on stick. Attachment weight must be subtracted.

REACH												HEIGHT
35'		30'		25'		20'		15'		10'		
Side	Front	Side	Front	Side	Front	Side	Front	Side	Front	Side	Front	
												60'
												55'
												50'
												45'
												40'
									* 16,027	* 16,027		35'
							* 14,335	* 14,335				30'
				12,903	* 13,466	* 13,775	* 13,775					25'
		9,284	* 11,114	12,754	* 14,448	* 13,837	* 13,837					20'
		9,153	* 13,896	12,341	* 16,192	* 16,203	* 16,203	* 14,916	* 14,916			15'
		8,894	14,194	11,798	18,900	16,461	* 25,166	25,229	* 44,057			10'
		8,620	13,893	11,259	18,294	15,455	25,829	23,174	41,811			5'
		8,418	13,671	10,851	17,834	14,750	25,003	22,044	* 39,946			0'
		8,369	13,617	10,649	17,608	14,425	24,621	21,702	39,936	* 18,279	* 18,279	-5'
				10,704	17,669	14,452	24,654	21,867	40,146	* 28,861	* 28,861	-10'
						14,842	* 24,495					-15'
												-20'
												-25'
												-30'
												-35'

The following notes pertain to this machine equipped with 31.5" wide track pads and no additional counterweight:

1. Do not attempt to lift or hold any load that exceeds these rated values at their specified load radii and heights.
2. The least stable position is over the side.
3. The operator should be fully acquainted with machine operation before operating the machine.
4. Lifting capacities assume a machine standing on level, firm and uniform supporting surface. Operator must make allowance for job conditions such as soft or uneven ground, out of level conditions, side loads, sudden stopping of loads, hazardous conditions, inexperienced personnel, etc.
5. The above theoretical ratings are based on calculations derived from standard O.E.M. lift charts. They do not exceed 87% of hydraulic lifting capacity or 75% of tipping capacity. Rated loads marked with an asterisk (*) are limited by hydraulic lifting capacity.
6. Do not boom down with tool on the ground and front fully retracted, doing so may cause damage to machine.

Lifting Capacities

P/N: 0M20945-3

SK300LC
20'-4" Straight Boom
10'-2" Factory Stick



Lift capacities calculated at attachment pivot point on stick (lbs).
No attachment on stick. Attachment weight must be subtracted.

REACH												HEIGHT
35'		30'		25'		20'		15'		10'		
Side	Front	Side	Front	Side	Front	Side	Front	Side	Front	Side	Front	
												60'
												55'
												50'
												45'
												40'
												35'
							* 13,191	* 13,191	* 19,878	* 19,878		30'
							18,386	* 18,796	* 17,898	* 17,898		25'
				12,686	* 18,446	18,041	* 19,769	* 18,138	* 18,138			20'
				12,378	19,477	17,305	* 24,679	26,677	* 28,752			15'
		9,132	14,396	11,946	18,991	16,403	26,837	24,613	43,480			10'
		8,974	14,223	11,542	18,537	15,628	25,929	23,132	* 36,174			5'
		8,916	14,159	11,282	18,244	15,175	25,398	22,584	* 34,775			0'
				11,235	18,191	15,067	25,271	22,606	40,922	* 19,800	* 19,800	-5'
				11,508	18,498	15,281	25,522	22,991	* 37,090			-10'
												-15'
												-20'
												-25'
												-30'
												-35'

The following notes pertain to this machine equipped with 31.5" wide track pads and no additional counterweight:

1. Do not attempt to lift or hold any load that exceeds these rated values at their specified load radii and heights.
2. The least stable position is over the side.
3. The operator should be fully acquainted with machine operation before operating the machine.
4. Lifting capacities assume a machine standing on level, firm and uniform supporting surface. Operator must make allowance for job conditions such as soft or uneven ground, out of level conditions, side loads, sudden stopping of loads, hazardous conditions, inexperienced personnel, etc.
5. The above theoretical ratings are based on calculations derived from standard O.E.M. lift charts. They do not exceed 87% of hydraulic lifting capacity or 75% of tipping capacity. Rated loads marked with an asterisk (*) are limited by hydraulic lifting capacity.
6. Do not boom down with tool on the ground and front fully retracted, doing so may cause damage to machine.