

# Bull Hog

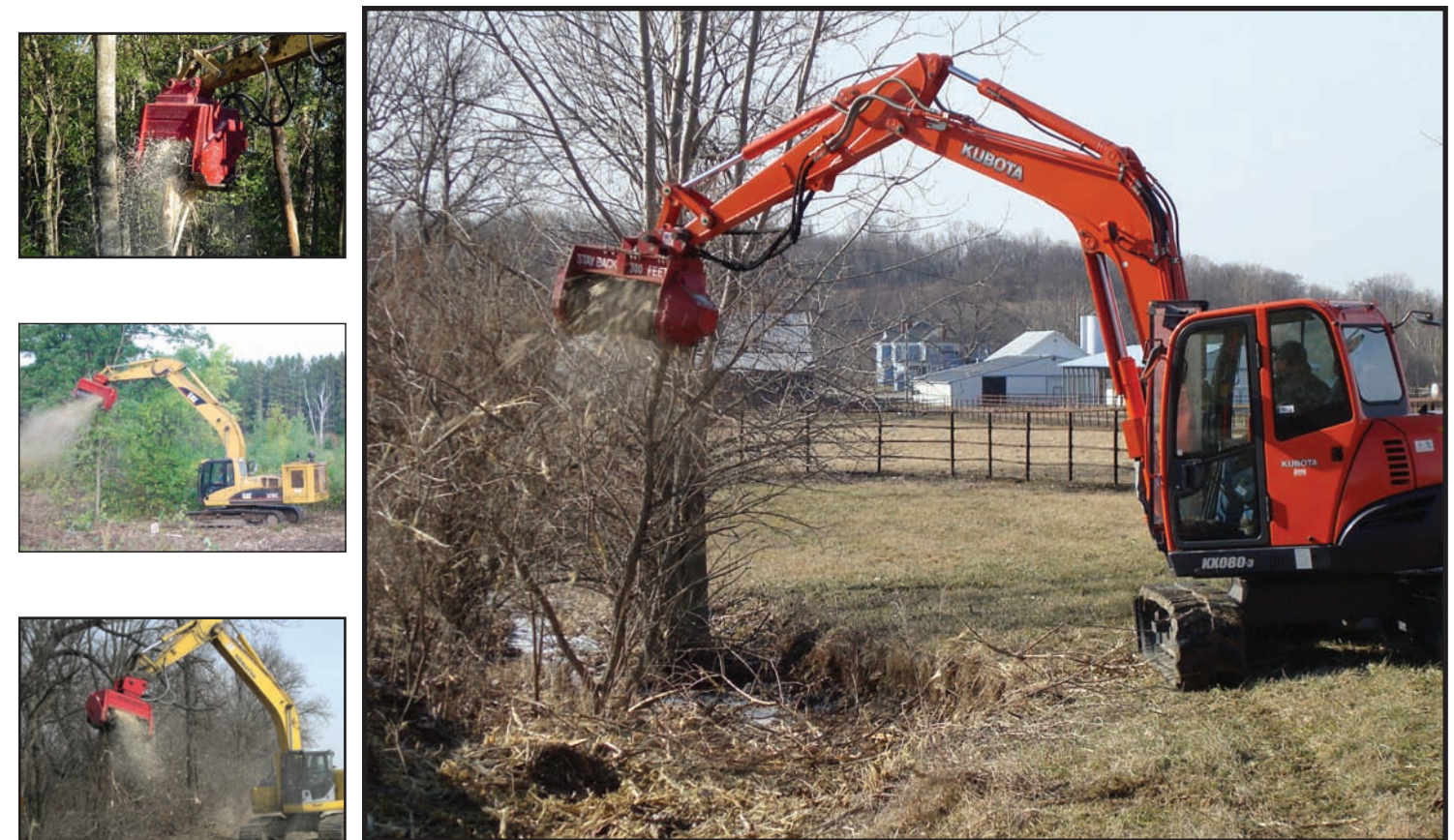
# Skid Steer

# Bull Hog

# Excavator

Fecon's skidsteer Bull Hog mulchers are ideal for high flow skidsteers. They clear brush, trees and stumps down to ground level. Quickly mulch standing trees 4-6" in diameter (depending on horsepower) and intermittently process 6-8" trees. The Bull Hog for skidsteers comes standard with double carbide teeth with either the HDT or FGT rotor system, which increases productivity by adding optimal knife tools to the skid steer Bull Hog. Aggressive counter cutting rake tines insure excellent material sizing and performance. Different push bar options are available including a hydraulic tilting feature that provides the best in tree and material handling.

Attached to an excavator, the Bull Hog mulchers are perfect for clearing trees in places that could be difficult to reach with other track or wheeled carriers. Fecon's Severe Duty line is by far the strongest built mulching attachment in the industry. Heavy Duty models offer excellent durability and lower weight when compared with the Severe Duty models. CEM (Compact Equipment Mulchers) models offer the ideal balance of weight and durability, they deliver impressive performance on excavators with less power and lifting capacity. For maximum production many Bull Hog excavator models can be paired up with optional Fecon BHP power packs of 170-250HP. Choose a Fecon Bull Hog for your 7-45 ton excavator and experience fixed tool durability and performance that gets the job done!



Skid Steer Bull Hogs	Working Width	Overall Width	Weight	Min Flow	Max Flow	Tools
BH62 SS	50"	63"	2050 lbs	24 gpm	45 gpm	24
BH74 SS	61"	74"	2425 lbs	24 gpm	45 gpm	30
BH85 SS	72"	85"	2580 lbs	24 gpm	45 gpm	36
BH74 SD	61"	76"	2750 lbs	24 gpm	65 gpm	30
BH85 SD	72"	87"	3050 lbs	24 gpm	65 gpm	36

TYPE	MODEL	OVERALL WIDTH	WORKING WIDTH	APPROX WEIGHT	APPROX FLOW RANGE	COMMON EXC SIZE (METRIC TON)
Heavy Duty	CEM36	52"	36"	1,300 lbs	17-30 gpm	7-15 ton
Heavy Duty	BH47EXC	50"	37"	2,200 lbs*	27-45 gpm	12-20 ton
Heavy Duty	BH62EXC	62"	50"	2,500 lbs*	27-45 gpm	12-20 ton
Severe Duty	BH40EXC	51"	36"	3,000 lbs*	30-105 gpm	15-30 ton
Severe Duty	BH80EXC	71"	56"	4,000 lbs*	38-105 gpm	20-45 ton
Severe Duty	BH200EXC	77"	59"	4,400 lbs*	40-180 gpm	20-45 ton

\*Weights listed for EXC models will vary based on hydraulic motor choice and options & do not include weight of the mount.

CEM36 comes standard with a variable displacement hydraulic, CEM36 listed weight includes typical mount motor.

All other models can be equipped with variable displacement or fixed displacement hydraulic motors.